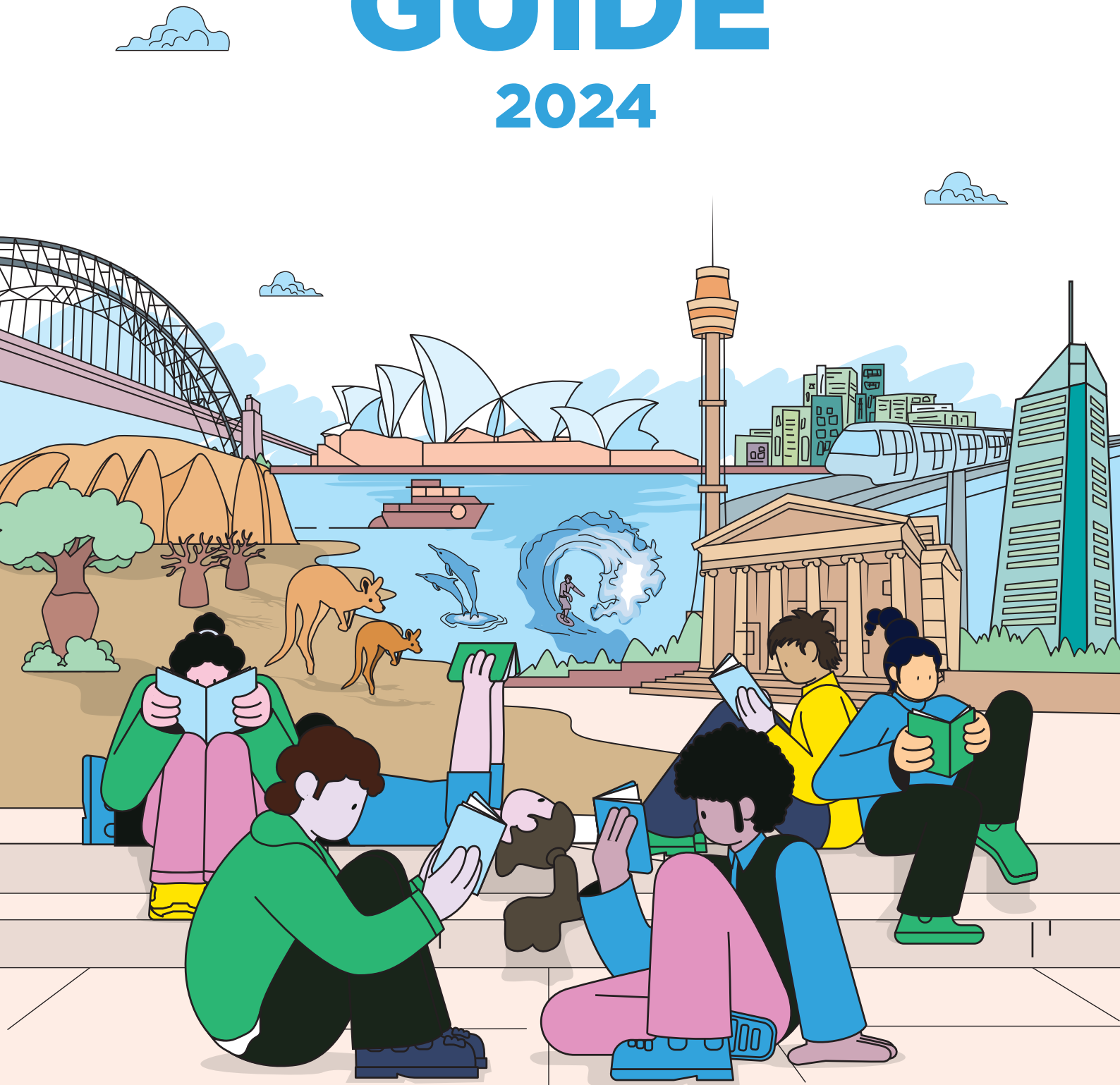




HCI Australia

COURSE GUIDE

2024



CONTENTS

This guide provides you with information about our Group, and the courses and support we offer you. We've also included information about life in Australia, study programmes and scholarships, and our campuses and facilities.

01.	ENDORSEMENTS & ACHIEVEMENTS	04 & 06
02.	WELCOME	08
03.	INTRODUCTION TO HCI AUSTRALIA	14
04.	STUDY IN AUSTRALIA	32
05.	SCHOLARSHIPS	38
06.	ACCOMMODATION & HEALTH COVER	40
07.	POLICIES & RULES FOR STUDYING IN AUSTRALIA	44
08.	OUR COURSES	52
09.	HOW TO APPLY	164
10.	STAY IN TOUCH	166





The Institute of Health & Nursing Australia (IHNA) Courses are eligible for funding under the Skills First Program run by Department of Education and Training in Victoria.



The Institute of Health & Nursing Australia (IHNA) is a registered training organisation and provides nationally recognised training. This means you can be assured that our training will provide you with a qualification that is recognised across Australia.

ENDORS



IHNA and IHM are listed on the Commonwealth Register of Institutions and Courses for Overseas Students (CRICOS), that lists all Australian education providers who can offer courses to people studying in Australia on student visas.



Velg Training is Australia's leading provider of Vocational Education and Training (VET) professional development and consulting services.



Australian Government
Tertiary Education Quality and Standards Agency

The Institute of Health & Management (IHM) is accredited by the Tertiary Education Quality and Standards Agency (TEQSA) for the delivery of specialised postgraduate courses which encompass health, management and nursing specialties.



Australian Government
Australian Skills Quality Authority

ASQA, the Australian Skills Quality Authority is the national regulator for Australia's vocational education and training sector, and is responsible for regulating courses and training providers. IHNA is accredited by the Australian Skills Quality Authority (ASQA), certifying that nationally approved quality standards are met.

EMENTS



IHNA is a member of ACPET (Australian Council for Private Education and Training). ACPET is the industry association representing quality independent providers of education.



The Institute of Health & Nursing Australia (IHNA's) nursing programs are accredited by the Australian Nursing and Midwifery Accreditation Council (ANMAC) as they conform to the quality standards for nursing education.

ACHIEVEMENTS



EMENTS



WELCOME

Warm greetings from the Health Careers International Group! We're very pleased that you are considering undertaking one of our study programmes.

Studying overseas is one of the biggest decisions you'll ever make, and it's also one that is sure to transform your future.

Healthcare is a noble profession that is highly valued and will always be respected, and you've taken the right decision in making this your career choice.



The HCI Group is committed to offering our students with unique learning experiences that are delivered through the latest technology platforms, using state-of-the-art infrastructure and collaborative tools.

Our expert faculty and structured curriculum ensure that our students are highly sought-after for employment upon completion of their program.



Today
we have
campuses
across
**Australia &
India**



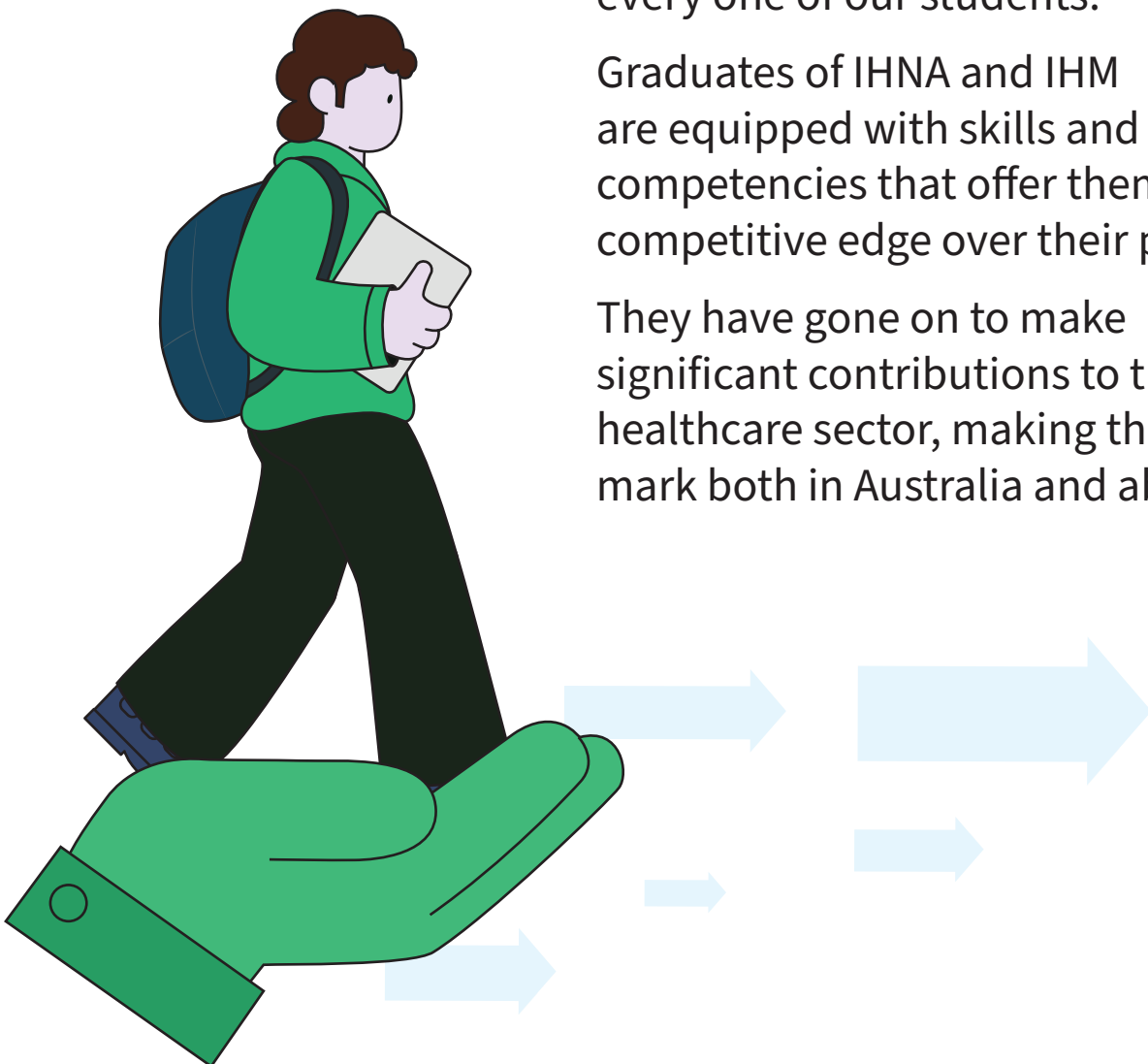
WE LOVE OUR STUDENTS!

Our students are always at the heart of everything we do, and we go the extra mile to ensure that your student experience is a positive one.

Our campus environments are relaxed and welcoming, and our faculty and staff will do their best to maximise the potential of each and every one of our students.

Graduates of IHNA and IHM are equipped with skills and competencies that offer them a competitive edge over their peers.

They have gone on to make significant contributions to the healthcare sector, making their mark both in Australia and abroad.



HELP IS AT HAND.

If you need counselling, our course advisors are at hand. If you're looking for travel or visa assistance, language support, accommodation, or healthcare information, our International Student Office is always happy to help.

Have further questions? Connect with one of our friendly customer service staff, and get the answers you need!



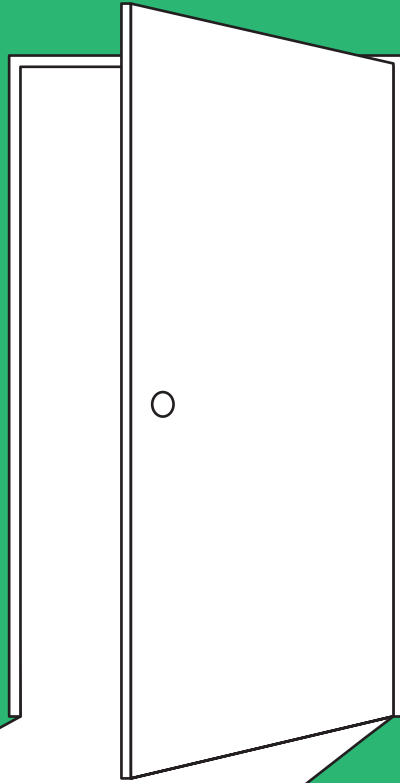
TAKE THE FIRST STEP IN A BRIGHT FUTURE.

Studying at HCIG may just be the best decision that you've ever made. An education in Australia is a valuable investment in your career, and is sure to open up a whole world of rewarding career opportunities.

Your future is right here, and it's filled with bright promise! Take the first step today.

Best wishes,
HCI Australia





INTRODUCTION TO HCI AUSTRALIA

WHO WE ARE

At HCI Australia, we provide skills-based, future-forward learning to develop the careers of healthcare professionals around the world.

Our courses and curriculum are delivered in novel ways that leverage adaptive learning technologies and collaborative tools, improving student comprehension and retention.

With a deep commitment to maintaining quality and global standards in education, we have become one of Australia's leading educators in the healthcare sector.





With the overarching aim of becoming the first private healthcare university in Australia by 2025, we are working closely with industry and offering flexible education programs that recognise that work, learning, and life should be able to coexist together.



We offer these study programs through our two premier institutes, the [Institute of Health and Nursing Australia \(IHNA\)](#) and the [Institute of Health & Management \(IHM\)](#).





CRICOS code:
03386G



RTO ID:
21985



ABN:
59 106 800 944



ACN:
106 800 944

The Institute of Health and Nursing Australia (IHNA) is a leading provider of nursing and healthcare courses in Australia, offering a range of nationally recognised qualifications and training programs to students across the country.

Accredited with Australian Skills Quality Authority (ASQA) and Australian Nursing & Midwifery Accreditation Council (ANMAC).



Australian Government
Australian Skills Quality Authority



Australian
Nursing & Midwifery
Accreditation Council

IHNA has been a premier nursing provider since 2007 and has dedicated a quality student experience in learning and teaching to over 20,000 students for a satisfying career and rewarding profession in Nursing, Allied Health, Community Services, and Early Childhood.



IHNA's Contemporary Laboratories and Facilities, Administrative and Educational Support, Healthcare Experts and Trainers, Student Welfare, and Management are committed to a positive student journey.



CRICOS code:
03407G



HEP ID:
PRV 14040



ABN:
19 155 760 437



ACN:
155 760 437

The Institute of Health & Management (IHM) has distinguished itself as Australia's premier provider of exceptional healthcare education at a graduate level.

Accredited by Tertiary Education Quality and Standards Agency (TEQSA), Australian Nursing & Midwifery Accreditation Council (ANMAC), and Australian Association of Social Workers (AASW).



Australian Government
Australian Skills Quality Authority

IHM is a premier provider of holistic healthcare education in Australia, with industry-acclaimed programmes in Nursing, Dentistry, Medicine, Public Health, and Social Work. Technology-rich, Innovative Learning Environments, and Practical Learning outcomes are key focuses for IHM.



The Virtual Simulations, Immersive Platforms, and Quality Curriculum are aligned with global best practices which equip students with the latest Knowledge, Tools, Techniques, Skills, and Competencies.

OUR VISION

To be an internationally recognised University College of choice in Health and Wellness Education.



OUR MISSION

Education for Employment



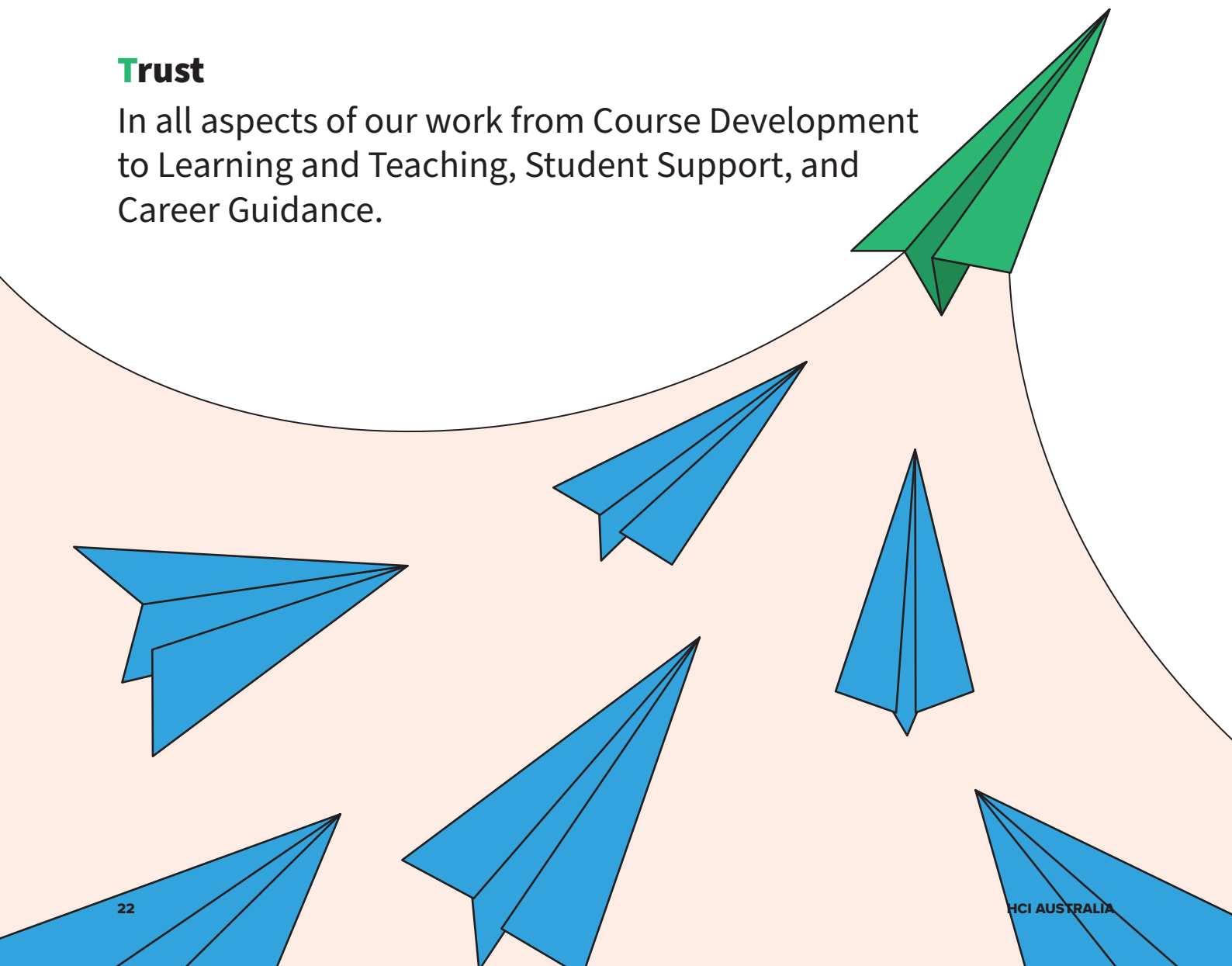
OUR VALUES

Doing things **ICEHOT** we are driven by our core values of:

- Innovation**
- Caring**
- Excellence**
- Honesty**
- Openness**

Trust

In all aspects of our work from Course Development to Learning and Teaching, Student Support, and Career Guidance.





INNOVATION:

- Be creative, innovate and forward-thinking in the design of our programs and services
- Adopt a culture of innovation in every aspect of the delivery of our programmes and services



OPENNESS:

- Be transparent, open-minded and imaginative
- Try new things and be curious to learn more and to understand



CARING:

- Be empathetic and maintain a primary focus on the welfare of our students
- Understand the unique requirements of our students and celebrate their diversity



HONESTY:

- Be truthful and demonstrate fairness and truthfulness in our actions



EXCELLENCE:

- Exceed expectations and strive to consistently deliver excellence in training delivery
- Provide an educational environment that is inclusive and reflects the diversity of the communities it serves



TRUST:

- Be trust-worthy by demonstrating: Consistency, Compassion, Communication and Competency

OUR PURPOSE

Enhancing Lives through Education, Training and Technology

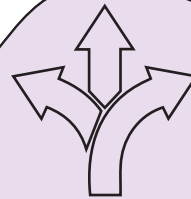




WHY STUDY WITH US?



Recognized
AWARD-WINNING
training provider



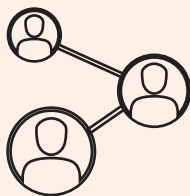
FLEXIBLE PATHWAY
options



GLOBALLY RELEVANT
skills and curriculum



INTERACTIVE ONLINE
classes with individual
attention to each student



**NETWORKING
OPPORTUNITIES**
with peak bodies and
industries



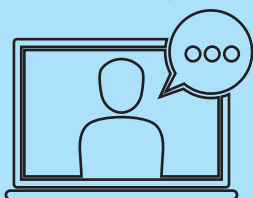
Access to
**24*7 ONLINE
LIBRARY**



**EXPERT INDUSTRY
PRACTITIONERS**
as faculty members



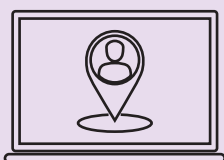
Well-Equipped
**SIMULATION
LABS**



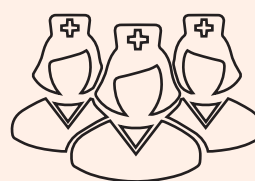
Dedicated student
SUPPORT TEAM



State-of-the-Art
**COMPUTER LABS
AND RESOURCES**



Work Integrated Learning (WIL)
**LEARN AS YOU
PRACTICE**



Experience with
**TRAINING MORE THAN
3000+ NURSES IN
AUSTRALIA**



Work
**PLACEMENT
ASSISTANCE**

CAMPUSES & FACILITIES

HCI's Campuses are Located in Perth, Sydney and

AUSTRALIA'S SUNNIEST CITY - "PERTH"



Summer
December - February
17.5°C - 30°C
Hot & dry



Autumn
March - May
14°C - 27°C
Mainly dry



Winter
June - August
08°C - 19°C
Cool & wet



Spring
September - November
12°C - 23°C
Sunny & showers



Melbourne.

The Perth campus is conveniently located in the vibrant Perth CBD in Western Australia (WA), Australia's largest State. Blessed with beautiful beaches, blue skies and great weather, Perth makes the perfect base for a unique Western Australian experience.

COSMOPOLITAN - "SYDNEY"



Summer
December - February
19°C - 26°C
Hot & dry



Autumn
March - May
15°C - 23°C
Mainly dry



Winter
June - August
09°C - 17°C
Cool & wet



Spring
September - November
11°C - 23°C
Sunny & showers



Sydney is the capital of New South Wales (NSW) and presents evidence of its early history as Australia's first settlement. It has developed over 200 years into a vibrant modern city situated in one of the world's most scenic environments and offers a truly "Australian" lifestyle experience. The Sydney campus is in Parramatta and serviced by excellent public transport.

MULTICULTURAL - "MELBOURNE"



Summer
December - February
14°C - 26°C
Hot & dry



Autumn
March - May
07°C - 15°C
Mainly dry



Winter
June - August
08°C - 19°C
Cool & wet



Spring
September - November
10°C - 20°C
Sunny & showers



Australia's most multicultural city, Melbourne is the capital city of Victoria (VIC). From snow skiing to surfing, shopping to world recognised cuisine this city offers something for everyone. HCI's Melbourne campuses are centrally located and easily accessible from around the city via public transport.



AUSTRALIAN

EDUCATION

There are many advantages to an Australian education.

The educational experience and lifestyle offered to students is

exceptional. The style of teaching is contemporary and encourages independence, creativity and innovative thinking rather than the traditional system of learning by rote.

As a result, more young people now opt to undertake further study in Australia. Students are encouraged to find practical solutions to problems, preparing them for changes of the future.

STUDY IN AUSTRALIA

If you've made the big decision to study in Australia, we can assure you that there won't be any regrets!

Australia is a place where you can expect the unexpected: where some of the oldest cultures in the world share their land with immigrants from almost every country in the world.

For students, this country is well-known for its high-quality education, as well as its stability and access to economic opportunities across every industry.

Studying in Australia means that you get to earn a qualification that's globally recognised and valued for its approach to giving you original and practical skills.

Australia is rapidly becoming the preferred number one destination for students who wish to pursue their higher education overseas. There are plenty of reasons for this.

The educational experience and lifestyle offered to students here are second to none, and the country is dynamic and vibrant, with very friendly people who readily welcome overseas students into their midst.

The learning style here is a unique one that encourages innovation, creativity, and independent thinking rather than learning by rote—as a result more and more young people nowadays opt to undertake further study in Australia.

HERE'S WHAT STUDENTS NEED TO KNOW, AT A GLANCE!



APPLICATION:

Typically, this is carried out with the education provider or through an Australian education agent. Once you receive your Letter of Offer you can confirm your enrolment and start the visa process.



VISA:

Depending on the type of study you will have access to different types of student visas. To know more about these, visit the [Australian Government](#) website, and check the student visa conditions on the [Australian Government Home Affairs](#) website. It's always best to apply at least 6-8 weeks prior to the semester commencement date.



COST OF LIVING:

Relative to other countries in the world with high standards of living, such as the UK and US, Australia maintains more affordable living expenses and tuition costs. International students can work up to 20 hours a week to earn a living and gain professional experience.



SCHOLARSHIPS:

There are many grants, scholarships and bursaries available to assist you financially with your studies in Australia as an international student. You can learn about the ones offered by the Australian Government, educational institutions, and other public and private organisations on the Study in Australia website [🔗 Study Australia](#)



ENGLISH COURSES:

There are options to take a general English course or a specialising in a specific industry. Make sure to explore the option that suits you on the English Language Intensive Courses for Overseas Students [🔗 ELICOS](#)



STUDY ABROAD OPTIONS:

Australia offers a diverse range of study options for international students, with more than 1,100 institutions and over 22,000 courses tailored for you. Choose from several flexible international study programmes, including a semester or year abroad in Australia, undergraduate or graduate degrees, and technical or vocational studies.

LIFE DOWN UNDER

Even as you complete your course of studies in Australia, you'll find that all other aspects of life are pretty great as well!

You can explore its unique and abundant natural wildlife and landscapes, multicultural communities, and renowned liveable cities with plenty of events and cultural activities to enjoy.

If you have a leaning towards adventure, you'll find great joy in exploring Australia's lush green parks and forests, or in tracing every inch of its magnificent waterways and beachfronts.

You can dive into famous coral reefs with incredibly blue, crystal-clear waters, or hit any of the dirt tracks leading to treks in rocky hills and mountains. Intrepid travellers can take in the sun in any of the expansive deserts, or swim with whale sharks and fur seals in remote waters.

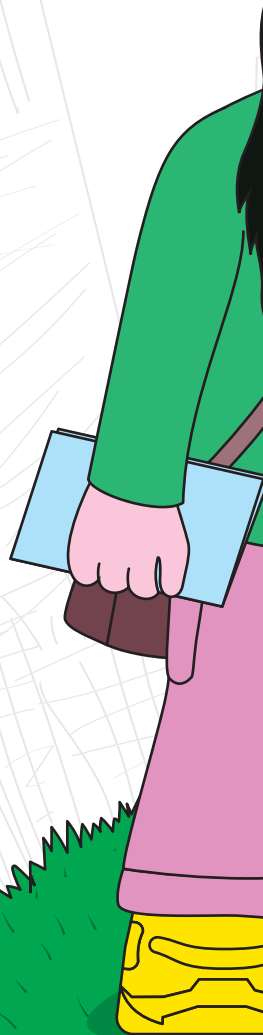
There are many things that make Australia extraordinary, and its urban cities are just a few of them! With bustling

neighbourhoods set amidst wondrous natural beauty, the cityscapes of Sydney, Melbourne and Perth will take your breath away.

You can savour the finest cosmopolitan food at high-end Michelin-starred restaurants, or dig into local, spicy food at small cafes.

If you're into the art scene, there are art galleries, captivating architecture and music societies that can give you your fill of the local culture. Australian society is made up of people from a rich variety of cultural, linguistic, and religious backgrounds.

Aboriginal and Torres Strait Islander people have inhabited Australia for tens of thousands of years, and other Australians are immigrants or the descendants of immigrants who arrived within the past two hundred years.



As a HCI student, you'll have the option to pick from one of our campuses in Melbourne, Sydney, and Perth – cities that are globally renowned for their liveability.



MELBOURNE

Is known for its culture and exciting array of events and places to visit, as well as its unpredictable weather.

SYDNEY

Is Australia's oldest city, great for beaches and impressive buildings.

PERTH

Is the capital city of Western Australia, known for its stunning natural beauty and vibrant cultural scene.

SCHOLARSHIPS

Scholarships will be awarded exclusively to students enrolled in designated courses offered by the prestigious Institute of Health and Nursing Australia (IHNA) and the Institute of Health & Management (IHM) in a significant step towards advancing education and expertise in the fields of health, nursing, and management.

These scholarships have been developed with the goal of encouraging deserving individuals who want to succeed in the ever-changing healthcare and management sectors. These scholarships not only increase students' academic prowess but also significantly contribute to the improvement of healthcare services and administrative practises by focusing on courses targeted to the specific demands of these industries. This ambitious endeavour demonstrates the organisation's unrelenting commitment to developing future leaders in these sectors, cultivating a group of experts ready to leave a lasting impression on the professions of health and management.



PLAN



MONEY





ACCOMMODATION & HEALTH COVER



ACCOMMODATION OPTIONS

When you reach your destination in Australia, we can provide you with accommodation information from the local community at no extra cost.

You can reserve homestays or short-term hotel accommodations, or you can ask for assistance in finding rental housing. We strongly advise you to live within an hour's drive of your college to make your life easy.

<https://www.studymelbourne.vic.gov.au/living-here/accommodation/choosing-accommodation-thats-right-for-you>.

1. HOMESTAY ACCOMMODATION

You can live with local Australian family, which is an excellent method for some students to learn about Australian culture.

Meals are provided by your homestay host family, which is typically a couple, a mother or father with children, or a single man or woman. However, you are responsible for your own travel, entertainment, phone calls, and other personal expenses.

To find suitable lodging, we make use of Australian Homestay Network's services. Students can make direct homestay arrangements with them.

2. SHORT-TERM LODGING FOR NEWCOMERS

If you want to arrange your own Short-term housing after arriving in Australia, we can assist with arranging short-term hostel or affordable hotel accommodations.

The price per night ranges from \$70 to \$100, but this will vary based on the region.

3. PRIVATE RENTAL AND SHARED HOUSING

In Australia, renting is a formal and legal agreement, which is a contract between you and a registered real estate agent, and you must sign a written, legal agreement before you can rent property in Australia.

This document bestows your rights and responsibilities. You can decide to live in a shared home where everyone has a room of their own but shares other spaces (kitchen, living areas, bathroom and laundry). Shared housing costs frequently cover all bills. The residents of the shared home often plan their own meals individually; however, they may also shop and cook together.

Shared housing costs vary depending on the type of property and the number of occupants. Most rental homes are unfurnished. You must pay the first month's rent, which ranges from \$865 to \$2,500, in advance.

In addition, you'll need to pay for furnishings, gas, electricity, and phone connections, as well as a bond that can be up to six weeks' worth of rent.

Note that these prices are simply estimates.



OVERSEAS HEALTH COVER

If you are an international student in Australia on a student visa, you should be covered by Overseas Student Health Cover (OSHC) while studying unless there is an exception applicable. The price of health cover is listed in your Letter of Offer.

You are free to choose any of the Australian accredited suppliers.

It's your obligation to make sure that your OSHC is always paid for the length of your student visa. Details like start date, end date, cost and policy type can be found on your Letter of Offer.

1. WHERE TO PURCHASE OSHC?

OSHC is offered by some insurers under a Deed of Agreement with the Department of Health and Aged Care in order to give students affordable access to adequate health insurance.

OSHC is only provided by a few recognised Health Insurers:

Ⓢ AHM OSHC

Ⓢ Allianz Care Australia
(People Care)

Ⓢ BUPA Australia

Ⓢ CBHS Interna-
tional Health

Ⓢ Medibank Private

Ⓢ NIB OSHC



POLICIES & RULES FOR STUDYING IN AUSTRALIA



ATTENDANCE AND PROGRESSION REQUIREMENTS

You must maintain sufficient academic progress to maintain your student visa (course progression).

Your teachers and the course coordinator will keep an eye on your academic development. In each study session, you must pass at least 50% of your courses (A study period is defined as a semester).

Some courses could have additional prerequisites, including passing necessary units to move on to the next semester as scheduled.

When there are chances to be evaluated, your course coordinator will advise you and provide assistance.

There will be a fee for each unit that needs to be repeated if you are obliged to make up a failed unit.

HCI must notify DHA of any pupils who are not making adequate development. Students who don't pass with at least 50% in a study period will receive a warning letter and could be put on a student contract before being reported to DHA.

You will receive a letter stating your Intent to Report to DHA if you fail twice in a row. You will be informed in this letter that you have 20 business days to file an appeal.

Students have the right to seek outside legal counsel and you have the right to appeal through HCI's official appeal process or through an external appeals mechanism.

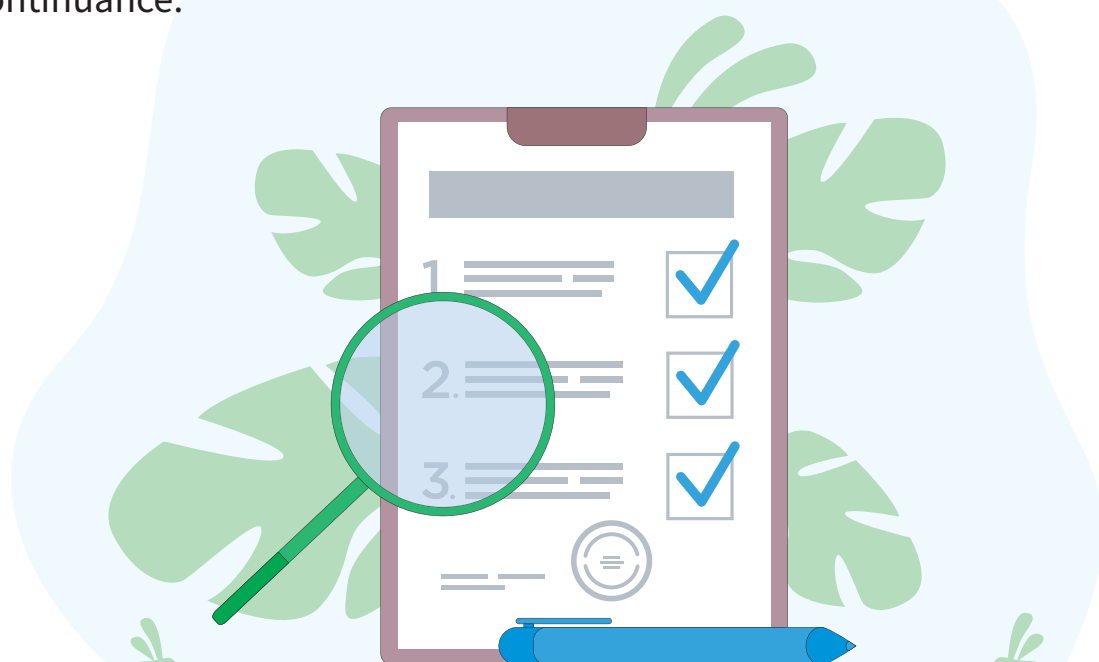
You must inform HCI if you want to use an external appeals mechanism. You will be reported to the DHA if you decide not to use our appeals process, withdraw from it, or if your appeal is unsuccessful.

A student has "inactively" informed the provider of his or her failure to continue studying if they stop attending a course, do not return from a leave of absence, or are not reachable by HCI.

HCI has set a minimum requirement of 14 working days of student absence before considering them as inactive and notifying them of discontinuance.

Students will be deemed to have discontinued to attend their course 'inactively' by surpassing the minimum non-attendance period of 14 working days by:

- Neglecting to return within 14 working days to the first timetabled class after a semester break.
- Neglecting to return within 14 working days to the first timetabled class after authorized mid-semester break.
- Neglecting to attend successive timetabled classes for more than 14 working days.





CHANGES TO ENROLMENT

You must enrol in a course and study with education providers who are listed on the Commonwealth Register of Institutions and Courses for Overseas Students (CRICOS) if you are an international student with a student visa.

If you want deferral or suspension of your study, you must submit a written request. Study suspensions or deferments are only permitted in compassionate or compelling conditions. You can email HCI to request a postponement of the start of your studies if you haven't yet enrolled.

You run the risk of being suspended or having your enrolment cancelled if you don't follow our Student Code of Conduct. If you violate our Student Code of Conduct and are suspended or have your enrolment cancelled, you are not entitled to a refund.

1. YOUR PERSONAL DATA

At HCI, we only gather the data necessary to offer you the services you request. Without your consent, we cannot disclose personal information to third parties like your family and friends.

When asked or required by law, we are compelled to give personal information to governmental entities including the DHA and the police.

2. UPDATING YOUR ADDRESS

You must register your residence address and phone number with us within seven days of your arrival and any time your contact information changes in accordance with Australian Government requirements governing student visas.

To view our most recent policies, go to [🌐 HCI Australia](#)

3. REQUESTING A TRANSFER TO ANOTHER INSTITUTE

If you wish to move to another provider before the six months of your principal course are up, you must fill out a Request for Release letter and provide the required supporting paperwork, as specified on the form.

A request for release will only be taken into consideration in cases where unforeseeable, unusual circumstances result in severe personal suffering.

Please be aware that your current course may not be the major (meaning final) course of study if it is merged with other courses. You must finish six months of the university course if you enrolled in a packaged course that also included a course from a university partner.

Within the first six months of your primary course, we won't permit you to switch to another provider if:

- Changing providers will have a negative impact on how well you are progressing in your courses.
- You've made up your mind to take a different course.
- The transfer is to a lower level of study (unless we assess that the lower level is to your academic benefit)
- You owe HCI money.
- We think the transfer will be bad for you.
- We think you're attempting to avoid being reported to DHA for not making the required academic or attendance progress.
- You are applying for a course of study at HCI.
- The request is based on the location of lodging and/or employment.

You must submit an International Students Withdrawal/Refund form in cases where a letter of release has been authorised. Any applicable costs that should be refunded will be handled in accordance with our International Student Fees and Refunds Policy for Students.

You have the right to submit an appeal in writing to the General Manager International if your request for a letter of release is turned down.



FEES AND REFUND POLICY

1. PAYMENT OF FEES

NEW STUDENTS

The first semester tuition and any other costs specified in their Letter of Offer must be paid by new students. Payment is necessary in order to accept our letter of offer. A Confirmation of Enrolment will be sent after we receive your payment and a Course Acceptance form, allowing you to apply for a student visa.

Prior to receiving the completed and signed Course Acceptance form, payments cannot be processed.

It's possible that you will additionally need to submit a deposit to our university partner if you are starting an undergraduate degree as part of a pathway programme.

CONTINUING STUDENTS

Your student email address will get a Fees Notice that details the amount due and deadlines for payment.

For recurring students, the standard fee due dates are:

- 15 February and 15 April in Semester 1
- 15 July and 15 September in Semester 2.

2. GENERAL FEES INFORMATION

- An administration fee of ___ is charged for late fees.
- Any fees paid directly to an educational agent in Australia or in another nation in connection with an application to study at HCI will not be subject to our liability.

- Fees are listed on the international course pages on our official website.
- The tuition fee, material fee, and any other fees listed are all considered fees.
- For HCI's courses, there are no enrolment or application fees.
- It is your obligation to give HCI your current mailing address.
- Fees are the cost of the course for the specified number of weeks.
- Repetition of subjects results in additional fees.

3. LATE PAYMENT OF FEES

When complete payment isn't made by the deadline, any or all of the following things could happen:

- You'll receive an intent to report letter, and a late payment fee of ___ will apply.
- Your enrolment may be cancelled pending the outcome of any appeals.
- Your course certificate won't be granted, your enrolment cancellation will be reported to DHA, and your results will be withheld.
- Unpaid fees will be handled in accordance with our procedures for collecting debt.

4. PAYMENT OPTIONS

You can choose from the following payment options:

- Bank transfer
- Credit card
- Direct deposit from an Australian bank account
- Personal cheques and AMEX are not accepted.
- Please use your HCI ID number as the reference number on the transfer.



ADMISSION REQUIREMENTS

In order to be admitted to the first year of a higher education programme at HCI you must:

- Possess a valid Australian Year 12 Victorian Certificate of Education (VCE) or a comparable international certificate.
- Attend a pre-admission interview, if possible.
- Meet the entrance requirements for the programme.
- Finish a written assignment or a math test.

Our international course advisors can provide information on alternative pathways and accessible opportunities to pursue higher education at HCI for prospective students who do not meet the standards for first year entry into our bachelor's degrees.

1. ENGLISH LANGUAGE REQUIREMENTS

A minimum International English Language Testing System (IELTS) score of 6.0 (Academic) overall with no individual band lower than 5.5 is required for admission to a first-year bachelor programme at HCI.

A minimum aggregate IELTS score of 5.5 is required for admission into certificate and diploma programmes. Speaking, listening, writing, and reading are all taken into account. Each course page includes a list of the complete English entry criteria, including the minimum scores for other recognised English language testing systems.

Following are the recognised English language testing systems:

- **IELTS** (International English Language Testing System)
- **TOEFL** computer based (Test of English as a Foreign Language)
- **PTE** (Pearson Test of English academic)
- **OET** (Occupational English Test).

The Australian Government recognises these tests for student visa applications from all countries.

Please be aware that an English language test score may be obligatory for your visa application.

Contact HCI Australia for evidence of the English standard required.

You should have taken the English language test in the two years prior to applying for a student visa.

The table below provides IELTS equivalent scores for PTE, CAE and OTE accepted by HCI Australia:

IELTS (academic)	5.5	6	6.5	7
PTE (academic)	45	50	58	66
Cambridge Advanced CAE	162	169	176	185
Occupational English Test OET	Pass	Pass	Pass	Pass
TOEFL iBT	46	64	83	94

HCI Australia reserves the right to raise fees annually. Tuition and other fees are accurate at the time of printing but may change.

All fees and payments should be made in Australian dollars.

The course materials fee is an annual charge.

We suggest that you make yourself aware of your rights and duties before and during the study in Australia.

Visit Study Australia's ESOS Act page [🌐 Study Australia](#)

OUR COURSES

Health Careers International (HCI), Australia, provides courses that meet the Australian Qualifications Framework (AQF) standards through its two leading institutes: the Institute of Health and Nursing Australia (IHNA) and the Institute of Health and Management (IHM).

WHAT IS THE AUSTRALIAN QUALIFICATION FRAMEWORK (AQF)?

The AQF is a national policy that sets the standards for qualifications across the entire education sector in Australia. It aims to ensure that qualifications are recognized and comparable across the country, and that they meet the expectations of students, employers, and the wider community.

AQF LEVELS

The AQF is structured around 10 levels, with Level 1 representing the lowest level of complexity and Level 10 representing the highest level of complexity.

AQF



Our First Premier Institute The Institute of Health and Nursing Australia (IHNA) and the courses providing with various AQF Standards are listed below:

DIPLOMA (AQF LEVEL 5):

At this level, students are provided with a higher level of knowledge and skills than at the certificate level. It prepares students for work in a range of industries or for further study at the degree level.

To enroll in a diploma course, students usually need to have completed Year 12 or an equivalent qualification or have relevant work experience. Examples of courses at this level include Diploma of Nursing, and Diploma of Early Childhood Education and Care.

CERTIFICATE IV (AQF LEVEL 4):

This is a qualification that sits above Certificate III and below Diploma in the AQF hierarchy. To enroll in a Certificate IV course, students usually need to have completed Year 12 or an equivalent qualification.

Certificate IV courses are designed to equip students with practical skills and knowledge that can be applied in the workplace. Examples of Certificate IV courses include Certificate IV in Aged Care, Certificate IV in Disability.

CERTIFICATE III (AQF LEVEL 3):

This is the first level of the AQF hierarchy, which provides foundational skills and knowledge for students. At this level, students develop practical skills and knowledge in a range of contexts, and usually do not require any prerequisites to enroll.

Examples of courses at this level include Certificate III in Early Childhood Education and Care, Certificate III in Individual Support.

SHORT COURSES

Institute of Health and Nursing Australia (IHNA) short courses and micro-credentials are intended to assist you in building a specific set of skills that will hugely make an impact on your career, you also get the advantage of saving your valuable time and money.

These short courses will refresh your qualifications and introduce you to new skills and enhance your resume.



SCHOOL OF NURSING

HLT54121 - DIPLOMA OF NURSING

The HLT54121 Diploma of Nursing is a highly sought-after qualification in Australia that prepares students for a rewarding career in the healthcare industry.

This course provides students with the skills and knowledge required to become an Enrolled nurse, providing a range of clinical and support services to patients in various healthcare settings.

Students also gain valuable practical experience through supervised clinical placements in hospitals, aged care facilities, and other healthcare settings.

To enroll in the Diploma of Nursing, students usually need to have completed Year 12 or an equivalent qualification, and meet other requirements such as language proficiency and criminal record checks.

Upon completion of the course, graduates can apply for registration with the Australian Health Practitioner Regulation Agency (AHPRA) as an enrolled nurse, and can pursue a range of rewarding career opportunities in the healthcare industry.

HLT54121 - DIPLOMA OF NURSING

CRICOS COURSE CODE:	AQF LEVEL:	AMOUNT OF TRAINING:
108323F	05	1540 HOURS
COURSE DELIVERY:	CAMPUSES:	COURSE DURATION:
BLENDED	MELBOURNE, SYDNEY, PERTH	18 MONTHS (78 WEEKS)

The course is provided through a Blended mode of delivery. It will be delivered over 1540 hours including theory, self-paced structured e-learning, simulation training and work based training/ Professional Experience Placement (PEP).

POSSIBLE JOB OUTCOMES

After successful completion of the program the graduates may apply for registration with the Nursing and Midwifery Board of Australia as an Enrolled Nurse. The occupational title is Enrolled Nurse (EN).

Upon successful registration with NMBA, graduates may gain employment in various healthcare facilities, which may include:

- Hospitals
- Day respite centres
- Rehabilitation centres
- Residential group homes
- Medical centres
- Training resource centres
- Open employment services
- Other community settings and client's homes

This course follows Competency-based training which is the concept that individuals learn at different rates as well as through different modes and different environments and that the skills and knowledge that a student has acquired previously are able to be formally recognised.

MODE OF DELIVERY

BLENDED DELIVERY

20 contact hours per week will be delivered through synchronised Online learning which includes on campus simulation based training and Professional Experience Placement.

Besides the above structured learning, students are advised that they will be required to do approximate 10 hours per week of unstructured learning.

The blended delivery mode is only available to domestic students on selected campuses and subject to eligibility.

Students must meet additional requirements for Professional Experience Placements as required such as a clear police check, working with children check & immunisations.

*Please call your respective campus locations for more details.

HLT54121 - DIPLOMA OF NURSING

ENTRY REQUIREMENTS
INTERNATIONAL STUDENTS

There are no pre-requisites or any other training package entry requirements for this program. However, there are IHNA's admission requirements for the program are as follows:

- Successful completion of year 12 or pathway through certificate IV level qualification from the HLT or CHC training package
- Successful completion of the language, literacy, and numeracy (LLN) test and demonstration of competence level as exit level 3 in the Australian Core Skills Framework (ACSF) in both reading and numeracy
- NMBA specified level of English language skills.

Achieve the required minimum scores in one of the following English language tests and meet the requirements for test results specified in this standard:

- | | | |
|-------------------|--------------------|---------------------------|
| → IELTS 7 in each | → TOEFL 94 | → 27 for writing |
| → OET B in each | → 24 for listening | → 23 for speaking |
| → PTE 65 in each | → 24 for reading | → Basic computer literacy |

All students must meet these additional requirement for Professional Experience Placement (PEP):

- A satisfactory National Police Clearance / Australian Federal Police Clearance Certificate (AFP) / NCC will be required for all practical placements.
- Students must complete the immunization process before the practical placement start date as some facilities will not provide placement to student without immunisation.
- Current Working with Children Checks (WCC).
- HLTAID011 Provide First Aid course must be completed separately prior to your first census date. This requirement can be filled by providing evidence of your completion in an Accredited First Aid course.

DOMESTIC STUDENTS

- Successful completion of year 12 or pathway through certificate IV level qualification from the HLT or CHC training package
- Successful completion of the language, literacy, and numeracy (LLN) test and demonstration of competence level as exit level 3 in the Australian Core Skills Framework (ACSF) in both reading and numeracy.
- NMBA specified level of English language skills; and
- Basic computer literacy skills

Upon successful completion of all the required units of competency, students will be issued a testamur with record of results.

ARTICULATION PATHWAY

HLT54121 DIPLOMA OF NURSING (2 YEARS)



**BACHELOR
OF NURSING
(2 YEARS)**



**BACHELOR
OF NURSING
(2 YEARS)**



**BACHELOR
OF NURSING
(2 YEARS)**



**BACHELOR
OF NURSING
(2 YEARS)**





SCHOOL OF EDUCATION

CHC50121 - DIPLOMA OF EARLY

CHILDHOOD EDUCATION AND CARE

The CHC50121 – Diploma of Early Childhood Education and Care qualification is suited to the role of childhood educators who are responsible for designing and implementing curriculum in early childhood education and care services.

You will be required to implement an approved learning framework within the requirements of the Education and Care Services National Regulations and the National Quality Standards.

This course teaches you the skills and knowledge to provide appropriate education and care to children. You may choose to work under direct supervision or autonomously and may also be required to supervise others.

Students who have successfully completed Certificate III in Early Childhood Education and Care will receive advanced standing for this course.

CHC50121 - DIPLOMA OF EARLY CHILDHOOD EDUCATION AND CARE

CRICOS COURSE CODE:	108093D	05
	AQF LEVEL:	AMOUNT OF TRAINING:
1250 HOURS	BLENDED	
COURSE DELIVERY:	CAMPUSES:	

The course is provided through a Blended Mode of Delivery. It will be delivered over 1250 hours including theory, self-paced structured e-learning, simulation training and work based training/ Professional Experience Placement (PEP).

POSSIBLE JOB OUTCOMES

- Early Learning Centre Room Leader/ Supervisor
- Children's Services Assistant Manager
- Early Childhood Educator
- Family Day Care Educator
- Nanny
- Playgroup Supervisor
- Preschool Educator
- Educational Leader
- Outside School Hours Care Co-ordinator/ supervisor

This course follows Competency-based training which is the concept that individuals learn at different rates as well as through different modes and different environments and that the skills and knowledge that a student has acquired previously are able to be formally recognised.

MODE OF DELIVERY

BLENDED DELIVERY

20 contact hours per week will be delivered through synchronised Online learning which includes on campus simulation based training and Professional Experience Placement.

Besides the above structured learning, students are advised that they will be required to do approximate 10 hours per week of unstructured learning.

The blended delivery mode is only available to domestic students on selected campuses and subject to eligibility.

Students must meet additional requirements for Professional Experience Placements as required such as a clear police check, working with children check & immunisations.

INTERNATIONAL STUDENTS:

Students are required to attend 20 hours of classes per week including simulation-based assessment and professional experience placements.

*Please call your respective campus locations for more details.

CHC50121 - DIPLOMA OF EARLY CHILDHOOD EDUCATION AND CARE

ENTRY REQUIREMENTS**INTERNATIONAL STUDENTS**

- 18 years of age and above at the time of commencement of the course
- Satisfactory completion of studies in applicant's home country equivalent to an Australian Year 12 qualification
- Entry into this course requires IELTS band score of 5.5 or equivalent. Candidates from countries with student visa assessment levels 1 and 2 who do not need an IELTS score can take the LLN indicator test. Please visit the Department of Home Affairs website for more information on student visa assessment levels and evidence of English requirement <https://immi.homeaffairs.gov.au/visas/web-evidentiary-tool>
- Apart from the above entry requirements, students are expected to have a numeracy score of Australian Core Skills Framework (ACSF) at level 3. (Language, literacy, and numeracy (LLN) test will be conducted during orientation).

DOMESTIC STUDENTS

- Hold a CHC30121 Certificate III in Early Childhood Education and Care or CHC30113 Certificate III in Early Childhood Education and Care course certificate possess basic computer skills
- Applicants will have to demonstrate their competence in literacy and numeracy levels in an Australian Core Skills Framework (ACSF) at Exit Level 3 and participate in a pre-training review (PTR) when enrolling into the course
- Basic computer skills.

Additional requirement for Professional Experience Placement (PEP)

- A satisfactory National Police Clearance /Australian Federal Police Clearance Certificate (AFP) / NCC
- Working with Children Check (WCC)
- Applicable immunisation certification such as COVID-19 Certificate.

IHNA highly recommends students to complete the immunisation process before the PEP start date as some facilities will not provide placement to student without Immunisation.

Aboriginal and/or Torres Strait Islanders are encouraged to apply.

Upon successful completion of all the required units of competency, students will be issued a testamur with record of results.

ARTICULATION PATHWAY

CHC50121 DIPLOMA OF EARLY CHILDHOOD EDUCATION AND CARE (2 YEARS)



**BA (TEACHING
BIRTH - 5 YEARS)
(3.5 YEARS)**



**BACHELOR OF
CHILD, YOUTH AND
FAMILY PRACTICE
(2.5 YEARS)**





SCHOOL OF EDUCATION

CHC51015 - DIPLOMA OF COUNSELLING

It is widely acknowledged that counselling is one of the most personally fulfilling Professions. As a counsellor, you will accomplish what you love and have the comfort of knowing there are several career and self-employment alternatives.

This qualification reflects the role of counsellors, who work with clients on personal and psychological issues. They use established counselling modalities and apply communication, micro-counselling and interviewing skills, besides varied counselling therapies, to assist clients.

A counsellor at this level will be working in a defined and supported counselling role in an established agency rather than in independent practice. The timing is now more than ever for you to pursue a career in counselling.

CHC51015 - DIPLOMA OF COUNSELLING

CRICOS COURSE CODE:	AQF LEVEL:	AMOUNT OF TRAINING:
108319B	05	1145 HOURS
COURSE DELIVERY:	CAMPUSES:	
BLENDED	MELBOURNE, SYDNEY, PERTH	

The course is provided through a Blended mode of delivery. It will be delivered over 1145 hours including theory, self-paced structured e-learning, simulation training and work based training/ Professional Experience Placement (PEP).

POSSIBLE JOB OUTCOMES

- Counsellor
- Case Worker
- Intake Counsellor
- Family and Marriage Counsellors
- Rehabilitation Counsellors
- Addiction Counsellors
- Business and Life Coaches
- Student Counsellors
- Youth and Refugee Counselling
- Bereavement Counsellors

This course follows Competency-based training which is the concept that individuals learn at different rates as well as through different modes and different environments and that the skills and knowledge that a student has acquired previously are able to be formally recognised.

MODE OF DELIVERY

BLENDED DELIVERY

20 contact hours per week will be delivered through synchronised Online learning which includes on campus simulation based training and Professional Experience Placement.

Besides the above structured learning, students are advised that they will be required to do approximate 10 hours per week of unstructured learning.

The blended delivery mode is only available to domestic students on selected campuses and subject to eligibility.

Students must meet additional requirements for Professional Experience Placements as required such as a clear police check, working with children check & immunisations.

*Please call your respective campus locations for more details.

ENTRY REQUIREMENTS

DOMESTIC STUDENTS

- 16 years of age and above at the time of commencement of the course
- Successful completion of an Australian Year 10 qualification or equivalent possess basic computer skills
- Applicants will have to demonstrate their competence in literacy and numeracy levels in an Australian Core Skills Framework (ACSF) at Exit Level 3 and participate in a pre-training review (PTR) when enrolling into the course
- Mature age students (22+) will also be considered without the minimum education requirements. Each case will be reviewed individually to ascertain the capacity of the student to meet course requirements.

Additional requirement for Professional Experience Placement (PEP)

- A satisfactory National Police Clearance / Australian Federal Police Clearance Certificate (AFP) / NCC
- Working with Children Check (WCC)
- Applicable immunisation certification such as COVID-19 Certificate
- Please declare in your application if you have a disability, disorder, or if you are on any medication that will require reasonable adjustments to fulfil these requirements.

IHNA highly recommends students to complete the immunisation process before the PEP start date as some facilities will not provide placement to student without Immunisation.

Aboriginal and/or Torres Strait Islanders are encouraged to apply.

Upon successful completion of all the required units of competency, students will be issued a testamur with record of results.





SCHOOL OF ALLIED HEALTH

CHC52015 - DIPLOMA OF COMMUNITY SERVICES (CASE MANAGEMENT)

The Diploma of Community Services (Case Management) is ideal for gaining the necessary skill sets for a profession in the Community Services sector. Students can become an advocate in areas such as family welfare, community health, employment services and disability services.

The responsibilities of Case Managers are diverse in nature but generally include duties such as the implementation of service programs, the evaluation and assessment of client needs, and coordinating referral processes.

Students may undertake this course as an entry pathway into the care/ support industry.

Our course is directed towards developing multiskilled workers who can communicate effectively and advocate on behalf of clients, employ counselling techniques, work one-on-one and in groups, apply all aspects of case management, including complex assessment and referral, implement community development strategies, understand the impacts of sociological factors on clients and case management techniques.

CHC52015 - DIPLOMA OF COMMUNITY SERVICES (CASE MANAGEMENT)

CRICOS COURSE CODE:	AQF LEVEL:	AMOUNT OF TRAINING:
099946J	05	1400 HOURS
COURSE DELIVERY:	CAMPUSES:	
BLENDED	MELBOURNE, SYDNEY, PERTH	

The course is provided through a Blended mode of delivery. It will be delivered over 1400 hours including theory, self-paced structured e-learning, simulation training and work based training/ Professional Experience Placement (PEP).

POSSIBLE JOB OUTCOMES

- Community care manager
- Support facilitator (Community services)
- Coordinator of volunteer work
- Community program coordinator
- Team leader
- Pastoral care worker
- Care team leader
- Assistant community services worker
- Family services coordinator
- Community service worker

This course follows Competency-based training which is the concept that individuals learn at different rates as well as through different modes and different environments and that the skills and knowledge that a student has acquired previously are able to be formally recognised.

MODE OF DELIVERY

DOMESTIC STUDENTS:

BLENDED

(Blended: online real time theory tutorials with on campus skills training in a simulation environment)

The course is provided through blended mode of delivery. It will be delivered over 1480hours including theory, tutorial, simulations and formative activities (925 hours), summative assessment (155 hours) and 400 hours of professional experience placement (PEP). Besides the above structured learning, students are advised that they will be required to do unstructured learning as assigned.

INTERNATIONAL STUDENTS:

FACE TO FACE

The course is provided through blended mode of delivery. It will be delivered over 1480hours including theory, tutorial, simulations and formative activities (925 hours), summative assessment (155 hours) and 400 hours of professional experience placement (PEP). Besides the above structured learning, students are advised that they will be required to do unstructured learning as assigned.

*Please call your respective campus locations for more details.

CHC52015 - DIPLOMA OF COMMUNITY SERVICES (CASE MANAGEMENT)

ENTRY REQUIREMENTS**INTERNATIONAL STUDENTS**

- 18 years of age and above at the time of commencement of the course
- Satisfactory completion of studies in the applicant's home country is equivalent to an Australian Year 12 qualification
- IELTS band score of 5.5 or equivalent
- Apart from the above entry requirements, students are expected to have a numeracy score of the Australian Core Skills Framework (ACSF) at level 3. (Language, literacy, and numeracy (LLN) test will be conducted during orientation)
- Students must meet additional requirements for Professional Experience Placements as required such as a clear police check, working with children check & immunisations.

DOMESTIC STUDENTS

- 18 years of age and above at the time of commencement of the course
- Successful completion of an Australian Year 12 course or equivalent
- Mature age students (22+) may also be considered without the minimum education requirements. Each case will be reviewed individually to ascertain the capacity of the applicant to meet course requirements.

Additional requirement for Professional Experience Placement (PEP)

- A satisfactory National Police Clearance / Australian Federal Police Clearance Certificate (AFP) / NCC
- Working with Children Check (WCC)
- Applicable immunisation certification such as COVID-19 Certificate
- Please declare in your application if you have a disability, disorder, or if you are on any medication that will require reasonable adjustments to fulfil these requirements.

IHNA highly recommends students to complete the immunisation process before the PEP start date as some facilities will not provide placement to student without Immunisation.

Aboriginal and/or Torres Strait Islanders are encouraged to apply.

Upon successful completion of all the required units of competency, students will be issued a testamur with record of results.

ARTICULATION PATHWAY

CHC52015 DIPLOMA OF COMMUNITY SERVICES (CASE MANAGEMENT) (2 YEARS)



(3 YEARS)

- BACHELOR OF DISABILITY & DEVELOPMENTAL EDUCATION

(2 YEARS)

- BACHELOR OF DISABILITY & COMMUNITY INCLUSION



(2 YEARS)

- BACHELOR OF HUMAN SERVICES



(3 YEARS)

- BA IN COMMUNITY DEVELOPEMENT



(3 YEARS)

- BACHELOR OF SOCIAL WORK



(2.5 YEARS)

- BACHELOR OF CHILD, YOUTH AND FAMILY PRACTICE
- BACHELOR OF HUMAN SERVICES

(4 YEARS)

- BACHELOR OF SOCIAL WORK



(2 YEARS)

- BACHELOR OF COMMUNITY WELFARE
- BACHELOR OF SOCIAL SCIENCE
- BACHELOR OF HEALTH SCIENCE

(3 YEARS)

- BACHELOR OF SOCIAL WORK



SCHOOL OF ALLIED HEALTH

CHC53315 - DIPLOMA OF MENTAL HEALTH

This qualification reflects the role of workers who provide services to clients in relation to mental health issues. They can provide counselling, referral, advocacy, and education and health promotion services.

These workers are required to have high-level specialist knowledge, skills, and competencies, especially regarding laws affecting people with mental health issues, the range of services available to them, and health issues related to mental health.

The Diploma of Mental Health is a professional accreditation that focuses on the skills required to provide care for people with mental health issues. Because this work requires a person-centred approach, our teaching will prepare you to confidently provide counselling, referral, advocacy, and education/health promotion services.

Your learning will include high level specialist knowledge and skills in regards to laws affecting people with mental health issues and the range of services available to them.

CHC53315 - DIPLOMA OF MENTAL HEALTH

CRICOS COURSE CODE:	AQF LEVEL:	AMOUNT OF TRAINING:
108320J	05	1355 HOURS
COURSE DELIVERY:	CAMPUSES:	
BLENDED	MELBOURNE, SYDNEY, PERTH, KOCHI (INDIA)	

The course is provided through a Blended mode of delivery. It will be delivered over 1355 hours including theory, self-paced structured e-learning, simulation training and work based training/ Professional Experience Placement (PEP).

POSSIBLE JOB OUTCOMES

- Mental health community worker
- Community rehabilitation and support worker
- Welfare support worker
- Community rehabilitation worker
- Community support worker
- Mental health support worker
- Mental health outreach worker

This course follows Competency-based training which is the concept that individuals learn at different rates as well as through different modes and different environments and that the skills and knowledge that a student has acquired previously are able to be formally recognised.

MODE OF DELIVERY

BLENDED DELIVERY

The course is provided through supervised structured blended mode of delivery. It will be delivered and assessed over 1355 hours in 78 weeks which will include trainer session along with online self-paced structured e-learning as per the session plan, 120 hours of simulation training and 156 hours of its assessment and 160 hours of work-based training / professional experience placement (PEP).

20 contact hours will be delivered through synchronised online learning for 2 full days which includes on- campus/ online simulation based training. Professional experience placement and 6 hours of asynchronous learning.

Besides the above structured learning, students are advised that they will be required to do approximate 10 hours per week of unstructured learning.

The delivery mode is subject to your eligibility to access state funding requirements and other conditions, please contact our admissions consultants to know more.

*Please call your respective campus locations for more details.

ENTRY REQUIREMENTS

DOMESTIC STUDENTS

- 16 years of age and above at the time of commencement of the course
- Successful completion of an Australian Year 10 qualification or equivalent possess basic computer skills
- Applicants will have to demonstrate their competence in literacy and numeracy levels in an Australian Core Skills Framework (ACSF) at Exit Level 3 and participate in a pre-training review (PTR) when enrolling into the course
- Mature age students (22+) will also be considered without the minimum education requirements. Each case will be reviewed individually to ascertain the capacity of the student to meet course requirements.

Additional requirement for Professional Experience Placement (PEP)

- A satisfactory National Police Clearance / Australian Federal Police Clearance Certificate (AFP) / NCC
- Working with Children Check (WCC)
- Applicable immunisation certification such as COVID-19 Certificate
- Please declare in your application if you have a disability, disorder, or if you are on any medication that will require reasonable adjustments to fulfil these requirements.

IHNA highly recommends students to complete the immunisation process before the PEP start date as some facilities will not provide placement to student without Immunisation.

Upon successful completion of all the required units of competency, students will be issued a testamur with record of results.





SCHOOL OF ALLIED HEALTH AND HUMAN SERVICE

CHC43121 – CERTIFICATE IV IN DISABILITY SUPPORT

This course reflects the role of individuals in the community settings and peoples' homes, who provide support in a manner that empowers people with disabilities to achieve greater levels of independence, self-reliance, community participation and wellbeing.

Workers promote a person-centred approach, work according to and may contribute to an individualised plan, and work without direct supervision. They may be required to supervise and/or coordinate a small team.

These individuals take responsibility for their own outputs within the scope of their job role and delegation. Workers have a range of factual, technical and procedural knowledge, as well as some theoretical knowledge of the concepts and practices required to provide person-centred support.

CHC43121 – CERTIFICATE IV IN DISABILITY SUPPORT

CRICOS COURSE CODE:	AQF LEVEL:	AMOUNT OF TRAINING:
112922D	04	860 HOURS
COURSE DELIVERY:	CAMPUSES:	
BLENDED	MELBOURNE, SYDNEY, PERTH, KOCHI (INDIA)	

The course is provided through a Blended mode of delivery. It will be delivered over 950 hours including theory, self-paced structured e-learning, simulation training and work based training/ Professional Experience Placement (PEP).

POSSIBLE JOB OUTCOMES

- Behavioural support officer
- Marketing Coordinator
- Development officer
- Project officer (life enhancement team)
- Disability officer – day support
- Residential care officer
- Disability support officer/ worker
- Senior personal care assistant
- Employment coordinator (disability)
- Social educator
- Job coordinator
- Social trainer
- Lifestyle support officer
- Supervisor
- Local area coordinator

This course follows Competency-based training which is the concept that individuals learn at different rates as well as through different modes and different environments and that the skills and knowledge that a student has acquired previously are able to be formally recognised.

MODE OF DELIVERY

BLENDED DELIVERY

The course is provided through Blended mode of delivery. It will be delivered over 860 hours including theory, self-paced structured e-learning, simulation training and 120 hours of work-based training/ professional experience placement (PEP).

20 contact hours per week will be delivered through synchronised online learning which includes on-campus simulation-based training / assessment.

Besides the above structured learning, students are advised that they will be required to do approximate 15 hours per week of unstructured learning.

The simulation training is for review of the learning activities, practicing communication, work-based skills, management skills and to undertake other assessments e.g.: group presentation/individual presentation.

*Please call your respective campus locations for more details.

CHC43121 – CERTIFICATE IV IN DISABILITY SUPPORT

ENTRY REQUIREMENTS**INTERNATIONAL STUDENTS**

- Completion of: CHC33021 Certificate III in Individual Support (Disability)
OR
- Completion of: CHC33015 Certificate III in Individual Support (Disability)
OR
- Completion of: CHC30408 Certificate III in Disability plus the CHCSS00125 Entry to Certificate IV in Disability Support Skill Set
- 18 years of age and above at the time of commencement of the course*
- Successful completion of an Australian Year 11 course or equivalent
- English language proficiency with a minimum score of IELTS overall band of 5.5 (Academic) or equivalent. The test must have been taken no more than 2 years before applying for this course
- Mature age students (22+) may also be considered without the minimum education requirements. Each case will be reviewed individually to ascertain the capacity of the applicant to meet course requirements
- Apart from the above entry requirements, students are expected to have a numeracy score of the Australian Core Skills Framework (ACSF) at level 3. (Language, literacy, and numeracy (LLN) test will be conducted during orientation).

DOMESTIC STUDENTS

- 16 years of age and above at the time of commencement of the course
- Successful completion of an Australian Year 11 qualification or equivalent possess basic computer skills
- Applicants will have to demonstrate their competence in literacy and numeracy levels in an Australian Core Skills Framework (ACSF) at Exit Level 3 and participate in a pre-training review (PTR) when enrolling into the course
- Mature age students (22+) will also be considered without the minimum education requirements. Each case will be reviewed individually to ascertain the capacity of the student to meet course requirements.

Additional Requirement for professional experience placement (PEP)

- A satisfactory National Police Clearance / Australian Federal Police Clearance Certificate (AFP) / NCC
- Applicable immunisation certification such as COVID-19 Certificate.

IHNA highly recommends students to complete the immunisation process before the PEP start date as some facilities will not provide placement to student without Immunisation.

Aboriginal and/or Torres Strait Islanders are encouraged to apply.

Upon successful completion of all the required units of competency, students will be issued a testamur with record of results.





SCHOOL OF ALLIED HEALTH AND HUMAN SERVICE

CHC43015 - CERTIFICATE IV IN AGEING SUPPORT

The CHC43015 - Certificate IV in Ageing Support reflects the role of support workers who complete specialised tasks and functions in aged care.

They work either in residential, hospital or community-based environments and are required to take responsibility for their own work within defined organisation guidelines.

They will also be required to maintain quality service delivery through the development, facilitation, and review of individualised service planning and delivery. Workers will be required to demonstrate leadership and take responsibility for other team members.

The course modules are structured to provide a balanced program of theory and practise relevant to the career opportunities in the aged care industry.

CHC43015 - CERTIFICATE IV IN AGEING SUPPORT

CRICOS COURSE CODE:	AQF LEVEL:	AMOUNT OF TRAINING:
092899A	04	875 HOURS
COURSE DELIVERY:	CAMPUSES:	
BLENDED	MELBOURNE, SYDNEY, PERTH, KOCHI (INDIA)	

The course is provided through a Blended mode of delivery. It will be delivered over 950 hours including theory, self-paced structured e-learning, simulation training and work based training/ Professional Experience Placement (PEP).

POSSIBLE JOB OUTCOMES

- Aged Support Worker
- Aged Care Activity Worker
- Personal Care Assistance
- Care Service Team Leader
- Care Supervisor (Aged Care)
- Personal Service Assistance

This course follows Competency-based training which is the concept that individuals learn at different rates as well as through different modes and different environments and that the skills and knowledge that a student has acquired previously are able to be formally recognised.

MODE OF DELIVERY

BLENDED DELIVERY

The course is provided through Blended mode of delivery. It will be delivered over 875 hours including theory, self-paced structured e-learning, simulation training (120 hours) and 120 hours of work-based training/ professional experience placement (PEP).

Besides the above structured learning, students are advised that they will be required to do unstructured learning as assigned.

The simulation training is for review of the learning activities, practicing communication, work-based skills, management skills and to undertake other assessments e.g.: group presentation/individual presentation.

20 contact hours will be delivered through synchronised online learning which includes on- campus simulation based training and Professional experience placement.

Besides the above structured learning, students are advised that they will be required to do approximate 10 hours per week of unstructured learning.

The delivery mode is subject to your eligibility to access state funding requirements and other conditions, please contact our admissions consultants to know more.

*Please call your respective campus locations for more details.

CHC43015 - CERTIFICATE IV IN AGEING SUPPORT

ENTRY REQUIREMENTS**INTERNATIONAL STUDENTS**

- 18 years of age and above at the time of commencement of the course
- Satisfactory completion of studies in the applicant's home country is equivalent to an Australian Year 12 qualification
- Entry into this course requires IELTS band score of 5.5 or equivalent. Candidates from countries with student visa assessment levels 1 and 2 who do not need an IELTS score can take the LLN indicator test. Please visit the Department of Home Affairs website for more information on student visa assessment levels and evidence of English requirement <https://immi.homeaffairs.gov.au/visas/web-evidentiary-tool>
- Apart from the above entry requirements, students are expected to have a numeracy score of Australian Core Skills Framework (ACSF) at level 3. (Language, literacy, and numeracy (LLN) test will be conducted during orientation).

DOMESTIC STUDENTS

- 16 years of age and above at the time of commencement of the course
- Successful completion of an Australian Year 11 qualification or equivalent possess basic computer skills
- Applicants will have to demonstrate their competence in literacy and numeracy levels in an Australian Core Skills Framework (ACSF) at Exit Level 3 and participate in a pre-training review (PTR) when enrolling into the course
- Mature age students (22+) will also be considered without the minimum education requirements. Each case will be reviewed individually to ascertain the capacity of the student to meet course requirements.

Additional requirement for Professional Experience Placement (PEP)

- A satisfactory National Police Clearance / Australian Federal Police Clearance Certificate (AFP) / NCC
- Applicable immunisation certification such as COVID-19 Certificate.

IHNA highly recommends students to complete the immunisation process before the PEP start date as some facilities will not provide placement to student without Immunisation.

Aboriginal and/or Torres Strait Islanders are encouraged to apply.

Upon successful completion of all the required units of competency, students will be issued a testamur with record of results.





SCHOOL OF MANAGEMENT

HLT47315 - CERTIFICATE IV IN HEALTH ADMINISTRATION

The HLT47315 Certificate IV in Health Administration teaches you how to understand and use medical terminology, administer patient record-keeping systems, and contribute to the health industry's organisational performance.

You will also study a variety of customer service practises that will enable you to give excellent client care in a variety of medical and health-care settings.

You will be able to undertake a variety of administrative duties in health services or health facilities with a Certificate IV in Health Administration, both independently and as a senior member of staff in an administrative team.

Working in medical facilities such as clinics, hospitals, community health centres, and private practises is a possibility. You can choose to continue your education and increase your career opportunities with a Diploma of Practice Management after you have completed this online health care course.

HLT47315 - CERTIFICATE IV IN HEALTH ADMINISTRATION

CRICOS COURSE CODE:**092898B****AQF LEVEL:****04****AMOUNT OF TRAINING:****830 HOURS****COURSE DELIVERY:****BLENDED****CAMPUSES:****MELBOURNE, SYDNEY,
PERTH, KOCHI (INDIA)**

The course is provided through a Blended mode of delivery. It will be delivered over 830 hours including theory, self-paced structured e-learning, simulation training and work based training/ Professional Experience Placement (PEP).

POSSIBLE JOB OUTCOMES

- Health Administration Supervisor
- Medical Records Section Leader
- Senior Clinical Coder
- Senior Clerk
- Executive Assistant
- Ward Clerk
- Front office and reception duties
- Assistant to Practice Manager
- General Office Help

This course follows Competency-based training which is the concept that individuals learn at different rates as well as through different modes and different environments and that the skills and knowledge that a student has acquired previously are able to be formally recognised.

MODE OF DELIVERY**BLENDED DELIVERY**

The course is provided through blended mode of delivery. It will be delivered over 830 hours including theory, self-paced structured e-learning, simulation training (120 hours)

Besides the above structured learning, students are advised that they will be required to do unstructured learning as assigned. The simulation training is for review of the learning activities, practicing communication, work-based skills, management skills and to undertake other assessments e.g.: group presentation/individual presentation.

20 contact hours will be delivered through synchronised online learning which includes on- campus/ online simulation-based training.

Besides the above structured learning, students are advised that they will be required to do approximate 10 hours per week of unstructured learning.

The delivery mode is subject to your eligibility to access state funding requirements and other conditions, please contact our admissions consultants to know more.

*Please call your respective campus locations for more details.

HLT47315 - CERTIFICATE IV IN HEALTH ADMINISTRATION

ENTRY REQUIREMENTS

DOMESTIC STUDENTS

- 16 years of age and above at the time of commencement of the course
- Successful completion of an Australian Year 11 qualification or equivalent Entry into this course requires IELTS band score of 5.5 or equivalent
- Basic computer skills
- Applicants will have to demonstrate their competence in literacy and numeracy levels in an Australian Core Skills Framework (ACSF) at Exit Level 3 and participate in a pre-training review (PTR) when enrolling into the course
- Mature age students (22+) will also be considered without the minimum education requirements. Each case will be reviewed individually to ascertain the capacity of the student to meet course requirements.

Upon successful completion of all the required units of competency, students will be issued a testamur with record of results.





SCHOOL OF ALLIED HEALTH AND HUMAN SERVICE

HLT43015 – CERTIFICATE IV IN ALLIED HEALTH ASSISTANCE (PHYSIOTHERAPY)

The Certificate IV in Allied Health Assistance equips students with the information and skills necessary to give assistance to allied health practitioners, such as physiotherapists and occupational therapists.

Students are taught how to plan and manage therapy programmes that provide comprehensive treatment to individuals with rehabilitation requirements.

As a Physiotherapy Assistant, you can make a significant and positive impact on people's lives by using exercise and movement to substantially enhance patients' quality of life and physical capacity.

HLT43015 – CERTIFICATE IV IN ALLIED HEALTH ASSISTANCE (PHYSIOTHERAPY)

AQF LEVEL:**04****AMOUNT OF TRAINING:****920 HOURS****COURSE DELIVERY:****BLENDED****CAMPUSES:****MELBOURNE, SYDNEY,
PERTH, KOCHI (INDIA)**

The course is provided through a Blended mode of delivery. It will be delivered over 920 hours including theory, self-paced structured e-learning, simulation training and work based training/ Professional Experience Placement (PEP).

POSSIBLE JOB OUTCOMES

With the Certificate IV in Allied Health Assistance (Physiotherapy) in hand, you will be able to work professionally as a:

- Therapy Assistant
- Physiotherapy Assistant
- Community Rehabilitation Assistant
- Allied Health Assistant

This course follows Competency-based training which is the concept that individuals learn at different rates as well as through different modes and different environments and that the skills and knowledge that a student has acquired previously are able to be formally recognised.

MODE OF DELIVERY**BLENDED DELIVERY**

The course is delivered in a blended form, which means theory will be delivered online with on-campus simulation based training and assessment and workplace based professional experience placement.

*Please call your respective campus locations for more details.

ENTRY REQUIREMENTS

DOMESTIC STUDENTS

- 16 years of age and above at the time of commencement of the course
- Successful completion of an Australian Year 10 qualification or equivalent possess basic computer skills
- In addition to meeting the academic requirements applicants must demonstrate their competence in literacy and numeracy levels in an Australian Core Skills Framework (ACSF) at exit Level 3 and participate in a pre-training review when enrolling into the course
- Mature age students (22+) will also be considered without the minimum education requirements. Each case will be reviewed individually to ascertain the capacity of the student to meet course requirements.

Additional requirement for Professional Experience Placement (PEP)

- A satisfactory National Police Clearance / Australian Federal Police Clearance Certificate (AFP) / NCC
- Working with Children Check (WCC)
- Applicable immunisation certification such as COVID-19 Certificate
- Please declare in your application if you have a disability, disorder, or if you are on any medication that will require reasonable adjustments to fulfil these requirements.

IHNA highly recommends students to complete the immunisation process before the PEP start date as some facilities will not provide placement to student without Immunisation.

Aboriginal and/or Torres Strait Islanders are encouraged to apply.

Upon successful completion of all the required units of competency, students will be issued a testamur with record of results.





SCHOOL OF ALLIED HEALTH AND HUMAN SERVICE

HLT43015 – CERTIFICATE IV IN ALLIED HEALTH ASSISTANCE (OCCUPATIONAL THERAPY)

The Certificate IV in Allied Health Assistance (Occupational Therapy) course will give you the skills and knowledge to become a qualified Occupational Therapy Assistant (OTA) and to work as an OTA under the guidance of occupational therapists, who helps people of all ages with physical, sensory, or cognitive problems and improve health and quality of life of the patients. OTA is required to conduct therapeutic and program related activities under the supervision of a registered occupational therapist or other allied health professionals such as physiotherapists, speech therapists and podiatrists.

Supervision may be direct, indirect, or remote and must occur within organisational requirements. Student will also gain the skills from this course to work in a specialty area of occupational therapy (neurological, psychiatric, paediatric, and orthopaedic rehabilitation).

HLT43015 – CERTIFICATE IV IN ALLIED HEALTH ASSISTANCE (OCCUPATIONAL THERAPY)

AQF LEVEL:**04****AMOUNT OF TRAINING:****990 HOURS****COURSE DELIVERY:****BLENDED****CAMPUSES:****MELBOURNE, SYDNEY,
PERTH, KOCHI (INDIA)**

The course is provided through a Blended mode of delivery. It will be delivered over 990 hours including theory, self-paced structured e-learning, simulation training and work based training/ Professional Experience Placement (PEP).

POSSIBLE JOB OUTCOMES

With the Certificate IV in Allied Health Assistance (Physiotherapy) in hand, you will be able to work professionally as a:

- Therapy Assistant
- Occupational Therapy Assistant
- Community Rehabilitation Assistant
- Allied Health Assistant

This course follows Competency-based training which is the concept that individuals learn at different rates as well as through different modes and different environments and that the skills and knowledge that a student has acquired previously are able to be formally recognised.

MODE OF DELIVERY**BLENDED DELIVERY**

The course is delivered in a blended form, which means theory will be delivered online with on-campus simulation based training and assessment and workplace based professional experience placement.

*Please call your respective campus locations for more details.

ENTRY REQUIREMENTS

DOMESTIC STUDENTS

There are no pre-requisites or other training package entry requirements for this course.

You are, however, required to meet the admission criteria in order to meet industry requirements. This includes that you have:

- 16 years of age and above at the time of commencement of the course
- A National Police Clearance or Australian Federal Police (AFP) Clearance certificate
- Immunisation (this is required for the Professional Experience Placement)
- Basic computer skills
- Successfully complete an ACSF test and can work at Level 3 for all indicators (issued within the last 12 months from the time of admission).

Physical requirements that are necessary to pass the course objectives are:

- **Strength:** To assist with lifting and transferring a client, and perform CPR
- **Mobility:** To bend, stoop, and bend down to the floor; ability to move around rapidly; and to move in small, confined spaces
- **Hearing:** To hear through the stethoscope to discriminate sounds; to hear cries for help; to hear alarms on equipment and emergency signals; and various overhead pages
- **Vision:** To make physical assessments of client and equipment
- **Communication:** To communicate in both verbal and written formats; and interact with clients, staff, and faculty supervisors.

Please declare in your application if you have a disability, disorder, or if you're on any medication that'll require reasonable adjustments to fulfil these requirements.

Upon successful completion of all the required units of competency, students will be issued a testamur with record of results.





SCHOOL OF ALLIED HEALTH AND HUMAN SERVICE

HLT37215 - CERTIFICATE III IN PATHOLOGY COLLECTION

This qualification reflects the role of pathology collectors, for example in the private pathology sector, in hospitals and medical clinics. If you would like to work in pathology as a specimen collector (phlebotomist) this course will teach you how to take blood samples, various swabs and electrocardiograms for patients requiring pathology tests.

You will learn infection control, first aid, WHS principles, how to prepare samples for testing, as well as communication and customer service skills. The course includes performing live bleeds in class and out in the industry, giving you real life experience. Our teachers are all qualified pathology collectors with current industry experience.

We have strong, long-standing relationships with a number of pathology organisations to provide you with the opportunity to consolidate your skills and gain real work experience.

HLT43015 – CERTIFICATE IV IN ALLIED HEALTH ASSISTANCE (OCCUPATIONAL THERAPY)

AQF LEVEL:**03****AMOUNT OF TRAINING:****670 HOURS****COURSE DELIVERY:****BLENDED****CAMPUSES:**

**MELBOURNE, SYDNEY,
PERTH, KOCHI (INDIA)**

The course is provided through a Blended mode of delivery. It will be delivered over 670 hours including theory, self-paced structured e-learning, simulation training and work based training/ Professional Experience Placement (PEP).

POSSIBLE JOB OUTCOMES

- Pathology Assistant (Laboratory Aide)
- Pathology Collector (visiting)
- Pathology Specimen Collector

This course follows Competency-based training which is the concept that individuals learn at different rates as well as through different modes and different environments and that the skills and knowledge that a student has acquired previously are able to be formally recognised.

MODE OF DELIVERY**BLENDED DELIVERY**

20 contact hours will be delivered through synchronised online learning which includes on- campus simulation based training and Professional experience placement.

Besides the above structured learning, students are advised that they will be required to do approximate 10 hours per week of unstructured self-learning.

The delivery mode is subject to your eligibility to access state funding requirements and other conditions, please contact our admissions consultants to know more.

*Please call your respective campus locations for more details.

ENTRY REQUIREMENTS**DOMESTIC STUDENTS**

- 18 years of age and above at the time of commencement of the course
- Successful completion of an Australian Year 12 qualification or equivalent.
- In addition to meeting the academic requirements applicants must demonstrate their competence in literacy and numeracy levels in an Australian Core Skills Framework (ACSF) at exit Level 3 and participate in a pre-training review when enrolling into the course.

Aboriginal and/or Torres Strait Islanders are encouraged to apply.

Upon successful completion of all the required units of competency, students will be issued a testamur with record of results.



SCHOOL OF MANAGEMENT AND EDUCATION

CHC30121 - CERTIFICATE III IN EARLY CHILDHOOD EDUCATION AND CARE

The CHC30121 - Certificate III in Early Childhood Education and Care qualification is suited to the role of workers in a range of Early Childhood Educational settings, who work within the requirements of the Education and Care Services National Regulations and the National Quality Standard.

Having completed this course, you can support the implementation of an approved learning framework, and support children's wellbeing, learning and development.

This course teaches you the skills and knowledge to provide care to children, and to plan engaging and educational activities to maximise their development. You will be able to create individual profiles and provide appropriate education and care for the children you are working with.

You may choose to work under direct supervision or autonomously.

CHC30121 - CERTIFICATE III IN EARLY CHILDHOOD EDUCATION AND CARE

CRICOS COURSE CODE:	AQF LEVEL:	AMOUNT OF TRAINING:
108092E	03	880 HOURS
COURSE DELIVERY:	CAMPUSES:	
BLENDED	MELBOURNE, SYDNEY, PERTH	

The course is provided through a Blended mode of delivery. It will be delivered over 880 hours including theory, self-paced structured e-learning, simulation training and work based training/ Professional Experience Placement (PEP).

POSSIBLE JOB OUTCOMES

- Early Childhood Educator
- Childhood Educator Assistant
- Family Day Care Educator
- Nanny
- Outside School Hours Carer
- Programme Assistant
- Playgroup Supervisor
- Preschool Assistant

This course follows Competency-based training which is the concept that individuals learn at different rates as well as through different modes and different environments and that the skills and knowledge that a student has acquired previously are able to be formally recognised.

MODE OF DELIVERY

DOMESTIC STUDENTS:

BLENDED DELIVERY: Students are required to attend 20 hours of classes per week including simulation-based assessment and professional experience placements.

20 contact hours per week will be delivered through synchronised Online learning which includes on- campus simulation based training and Professional experience placement.

Besides the above structured learning, students are advised that they will be required to do approximate 10 hours per week of unstructured learning.

Students must meet additional requirements for Professional Experience Placements as required such as a clear police check, working with children check & immunisations.

SBA (1 to 2 weeks) at campus and Professional placement (160 hours – 3 to 4 weeks) is mandatory.

INTERNATIONAL STUDENTS:

FACE TO FACE DELIVERY: Students are required to attend 20 hours of classes per week including simulation-based assessment and professional experience placements.

BLENDED DELIVERY: 20 contact hours per week will be delivered through synchronised Online learning which includes on- campus simulation based training and Professional experience placement.

Besides the above structured learning, students are advised that they will be required to do approximate 10 hours per week of unstructured learning.

*Please call your respective campus locations for more details.

CHC30121 - CERTIFICATE III IN EARLY CHILDHOOD EDUCATION AND CARE

ENTRY REQUIREMENTS**INTERNATIONAL STUDENTS**

- Applicants are required to be 18 years old or above
- International English Language Testing System (IELTS) examination (Academic) with a minimum total band score of 5.5 and minimum score of 5.0 in each of the four components of listening, reading, writing and speaking or meets equivalent English language proficiency requirements including ELICOS at upper intermediate level
- Successful completion of an ACSF test with demonstrated competence as per IHNA LLN requirements (issued within the last 12 months from the time of admission)
- It is also essential for students to possess basic computer skills.

DOMESTIC STUDENTS

- Applicants are required to be 18 years old and above
- Successful completion of an ACSF test with demonstrated competence as per IHNA LLN requirements (issued within the last 12 months from the time of admission)
- It is also essential for students to possess basic computer skills
- Additional Requirements for Professional Experience Placement (PEP)
- A satisfactory National Police Clearance / Australian Federal Police Clearance Certificate (AFP) / NCC
- Working with Children Check (WCC)
- Applicable immunisation certification such as COVID-19 Certificate.

IHNA highly recommends students to complete the immunisation process before the PEP start date as some facilities will not provide placement to students without Immunisation.

Aboriginal and/or Torres Strait Islanders are encouraged to apply.

Upon successful completion of all the required units of competency, students will be issued a testamur with record of results.





SCHOOL OF ALLIED HEALTH AND HUMAN RESOURCES

CHC33021 – CERTIFICATE III IN INDIVIDUAL SUPPORT (AGEING, DISABILITY)

This qualification reflects the role of pathology collectors, for example in the private pathology sector, in hospitals and medical clinics. If you would like to work in pathology as a specimen collector (phlebotomist) this course will teach you how to take blood samples, various swabs and electrocardiograms for patients requiring pathology tests.

You will learn infection control, first aid, WHS principles, how to prepare samples for testing, as well as communication and customer service skills. The course includes performing live bleeds in class and out in the industry, giving you real life experience. Our teachers are all qualified pathology collectors with current industry experience.

We have strong, long-standing relationships with a number of pathology organisations to provide you with the opportunity to consolidate your skills and gain real work experience.

CHC33015 – CERTIFICATE III IN INDIVIDUAL SUPPORT (AGEING, DISABILITY)

CRICOS COURSE CODE:	AQF LEVEL:	AMOUNT OF TRAINING:
112921E	03	775 HOURS
COURSE DELIVERY:	CAMPUSES:	
BLENDED	MELBOURNE, SYDNEY, PERTH, KOCHI (INDIA)	

The course is provided through a Blended mode of delivery. It will be delivered over 830 hours including theory, self-paced structured e-learning, simulation training and work based training/ Professional Experience Placement (PEP).

POSSIBLE JOB OUTCOMES

- Accommodation support worker
- Community care worker
- Care assistant
- Personal care assistant
- Care service employees
- Field officer
- Personal care giver
- In-home respite worker
- Home care assistant
- Care service employees
- Care worker
- Personal care worker
- Support worker

This course follows Competency-based training which is the concept that individuals learn at different rates as well as through different modes and different environments and that the skills and knowledge that a student has acquired previously are able to be formally recognised.

MODE OF DELIVERY

INTERNATIONAL STUDENTS

BLENDED DELIVERY

20 contact hours per week will be delivered through synchronised Online learning which includes on campus simulation based training and Professional Experience Placement.

Besides the above structured learning, students are advised that they will be required to do approximate 10 hours per week of unstructured learning.

The course includes 120 hours of Professional Experience Placement (PEP).

Students must meet additional requirements for Professional Experience Placements as required such as a clear police check, working with children check & immunisations.

*Please call your respective campus locations for more details.

CHC33021 – CERTIFICATE III IN INDIVIDUAL SUPPORT (AGEING, DISABILITY)

MODE OF DELIVERY (CONTINUED)
DOMESTIC STUDENTS

Students can commence the Professional Experience Placement after completing Simulation-Based Assessments satisfactorily.

The course includes 120 hours of Professional Experience Placement (PEP). It will be in a community service setting such as aged care facilities or NDIS / health care providers.

The blended delivery mode is only available to domestic students on selected campuses and subject to eligibility. Please contact our team to find out more.

Students must meet additional requirements for Professional Experience Placements as required such as a clear police check, working with children check & immunisations.

*Please call your respective campus location for details.

ENTRY REQUIREMENTS
INTERNATIONAL STUDENTS

- 18 years of age and above at the time of commencement of the course
- Satisfactory completion of studies in applicant's home country equivalent to an Australian Year 12 qualification
- IELTS band score of 5.5 or equivalent
- Apart from the above entry requirements, students are expected to have a numeracy score of Australian Core Skills Framework (ACSF) at level 3. (Language, Literacy, and Numeracy (LLN) test will be conducted during orientation).

DOMESTIC STUDENTS

- 16 years of age and above at the time of commencement of the course
- Successful completion of an Australian Year 10 qualification or equivalent
- Possess basic computer skills
- Demonstration of competence in literacy and numeracy levels in an Australian Core Skills Framework (ACSF) at Exit Level 3 and participate in a pre-training review (PTR) when enrolling into the course
- Mature age students (22+) will also be considered without the minimum education requirements. Each case will be reviewed individually to ascertain the capacity of the student to meet course requirements.

Additional requirements for Professional Experience Placement (PEP)

- A satisfactory National Police Clearance / Australian Federal Police Clearance Certificate (AFP) / NCC
- Applicable immunisation certification such as COVID-19 Certificate.

IHNA highly recommends students to complete the immunisation process before the PEP start date as some facilities will not provide placement to students without Immunisation.

Aboriginal and/or Torres Strait Islanders are encouraged to apply.

Upon successful completion of all the required units of competency, students will be issued a testamur with record of results.





SCHOOL OF ALLIED HEALTH AND HUMAN RESOURCES

HLT33115 - CERTIFICATE III IN

HEALTH SERVICES ASSISTANCE

The HLT33115 - Certificate III in Health Services Assistance covers workers in a range of work roles who provide assistance to health professional staff with the care of clients. Health Services Assistance work in direct client contact but under supervision.

The curriculum for this qualification has been structured with elective groups for specific work functions in assisting in nursing work in acute care. Additionally, the qualification supports the multi skilling requirements of smaller and rural or remote work settings.

This qualification is suited to Australian Apprenticeship pathways.

HLT33115 - CERTIFICATE III IN HEALTH SERVICES ASSISTANCE

CRICOS COURSE CODE:	AQF LEVEL:	AMOUNT OF TRAINING:
093193E	03	580 HOURS
COURSE DELIVERY:	CAMPUSES:	
BLENDED	MELBOURNE, SYDNEY, PERTH, KOCHI (INDIA)	

The course is provided through a Blended mode of delivery. It will be delivered over 580 hours including theory, self-paced structured e-learning, simulation training and work based training/ Professional Experience Placement (PEP).

POSSIBLE JOB OUTCOMES

- Care Assistant
- Assistant in nursing
- Personal care assistant
- Care service employees
- Care worker
- Personal caregiver
- Nursing Assistant
- Personal care worker

This course follows Competency-based training which is the concept that individuals learn at different rates as well as through different modes and different environments and that the skills and knowledge that a student has acquired previously are able to be formally recognised.

MODE OF DELIVERY

BLENDED DELIVERY

The course is provided through supervised structured online mode delivery. It will be delivered and assessed over 660 hours which will include online theory, self-paced structured learning as per the session plan, simulation training, assessment and 80 hours of work-based training / professional experience placement (PEP).

Students will have 20 contact hours of which will be delivered as supervised structured online sessions & self-directed structured e-learning. Student will need to ensure they complete the tasks assigned to them in the structured e-learning as per session plan.

Besides the above structured learning, students are advised that they will be required to do approximate 10 hours per week of unstructured learning.

*Please call your respective campus locations for more details.

HLT33115 - CERTIFICATE III IN HEALTH SERVICES ASSISTANCE

ENTRY REQUIREMENTS

DOMESTIC STUDENTS

- Applicants are required to be 18 years' old
- In addition, all the applicants are required to have successfully completed an ACSF test and demonstrate competence as working at Level 3 for all indicators to enrol for this qualification (issued within the last 12 months from the time of admission)
- Mature age students (22+) will also be considered without the minimum education requirements. Each case will be reviewed individually to ascertain the capacity of the student to meet course requirements.

Additional requirements for professional experience placement (PEP)

- A satisfactory National Police Clearance / Australian Federal Police Clearance Certificate (AFP) / NCC
- Applicable immunisation certification such as COVID-19 Certificate.

IHNA highly recommends students to complete the immunisation process before the PEP start date as some facilities will not provide placement to students without Immunisation.

Aboriginal and/or Torres Strait Islanders are encouraged to apply.

Upon successful completion of all the required units of competency, students will be issued a testamur with record of results.





SCHOOL OF ALLIED HEALTH AND HUMAN RESOURCES

HLT37015 - CERTIFICATE III IN

STERILISATION SERVICES

The HLT37015 - Certificate III in Sterilisation Services provides an essential support service, assisting medical and nursing staff in providing surgical and clinical care to patients. Sterilisation is an integral process where consultation, surgery, and invasive procedures are required.

This qualification is primarily designed to provide a range of varied activities required by employed and responsible workers for the sterilisation of equipment and compliance with infection control policies and procedures.

HLT37015 - CERTIFICATE III IN STERILISATION SERVICES

AQF LEVEL:

03

AMOUNT OF TRAINING:

430 HOURS

COURSE DELIVERY:

BLENDED

CAMPUSES:

MELBOURNE, SYDNEY, PERTH

The course is provided through a Blended mode of delivery. It will be delivered over 430 hours including theory, self-paced structured e-learning, simulation training and work based training/ Professional Experience Placement (PEP).

POSSIBLE JOB OUTCOMES

- Sterilisation Technician
- Sterilisation Assistant
- Instrument Technician
- Hospital pharmacy assistant

This course follows Competency-based training which is the concept that individuals learn at different rates as well as through different modes and different environments and that the skills and knowledge that a student has acquired previously are able to be formally recognised.

MODE OF DELIVERY

BLENDED DELIVERY

All students are expected to complete SIL at their own time as a part of self-directed interactive learning which equates to 10 hours of study per week.

Lectures will be delivered online in a synchronous mode, for which recording will be available on Canvas. There will be 10 hours of lecture every week.

Tutorials will be conducted online in a synchronous mode. There will be 10 hours of tutorials every week.

Simulation based training (SBT) and simulation-based assessment (SBA) will be conducted on-campus in block.

Students will be provided with dedicated support sessions every week.

Students must meet additional requirements for Professional Experience Placements as required such as a clear police check, working with children check & immunisations.

*Please call your respective campus locations for more details.

HLT37015 - CERTIFICATE III IN STERILISATION SERVICES

ENTRY REQUIREMENTS

DOMESTIC STUDENTS

- 16 years of age and above at the time of commencement of the course
- Successful completion of an Australian Year 10 qualification or equivalent possess basic computer skills
- Applicants will have to demonstrate their competence in literacy and numeracy levels in an Australian Core Skills Framework (ACSF) at Exit Level 3 and participate in a pre-training review (PTR) when enrolling into the course
- Mature age students (22+) will also be considered without the minimum education requirements. Each case will be reviewed individually to ascertain the capacity of the student to meet course requirements.

Additional requirements for professional experience placement (PEP)

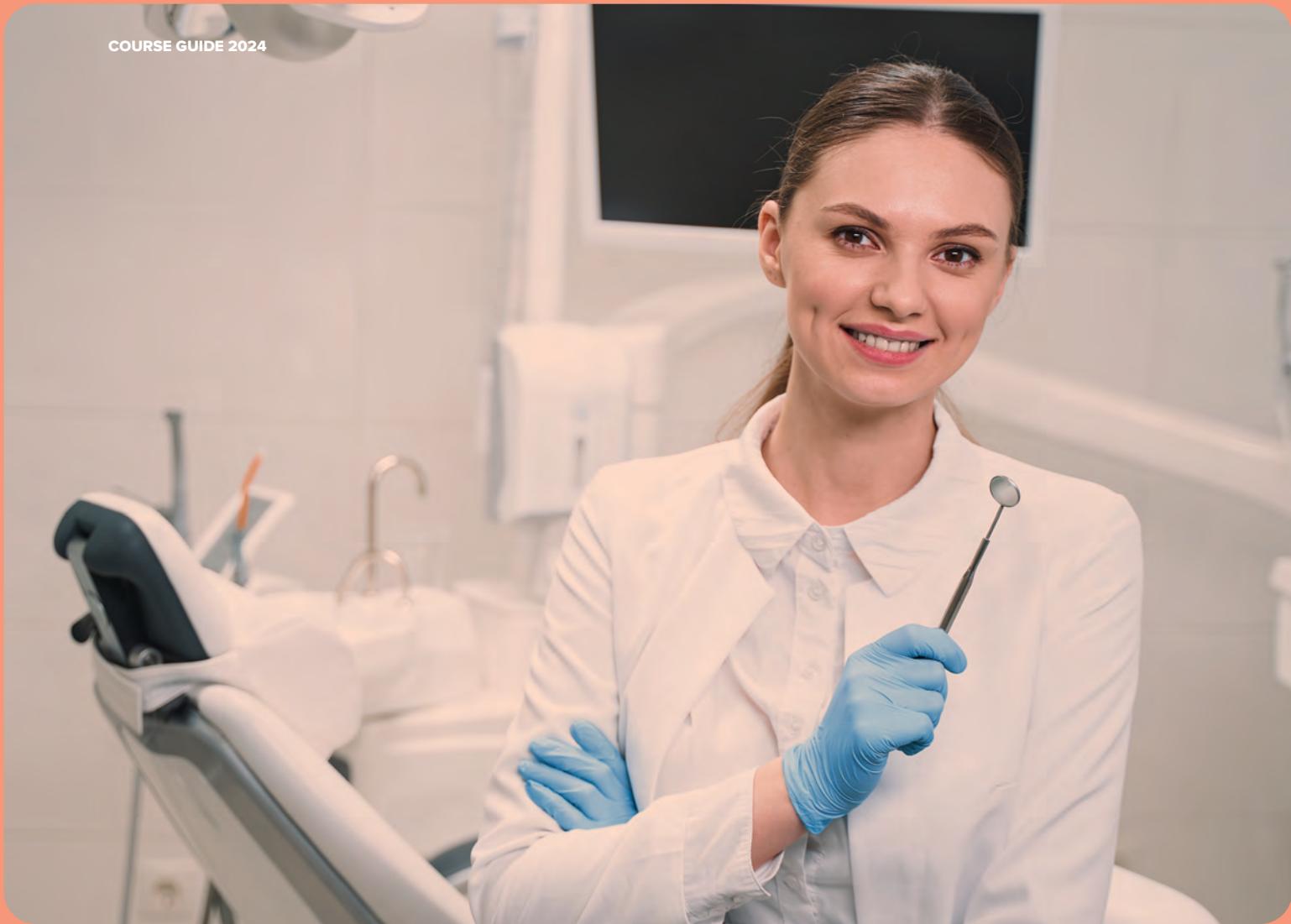
- A satisfactory National Police Clearance / Australian Federal Police Clearance Certificate (AFP) / NCC
- Working with children check (WCC)
- Applicable immunisation certification such as COVID-19 Certificate.

IHNA highly recommends students to complete the immunisation process before the PEP start date as some facilities will not provide placement to students without Immunisation.

Aboriginal and/or Torres Strait Islanders are encouraged to apply.

Upon successful completion of all the required units of competency, students will be issued a testamur with record of results.





SCHOOL OF NURSING

HLT35021 – CERTIFICATE III IN DENTAL ASSISTING

HLT35021 – Certificate III in Dental Assisting qualification reflects the role of workers who assist dental practitioners during oral health care procedures.

The role includes: Maintaining high infection control standards.

- Assisting with practice administration
- Supporting quality and professionalism in the dental sector

Dental assistants are frequently the first point of contact for patients, allowing them to make the practice friendly and give high-quality care. Client service delivery, administrative activities such as reception, appointment scheduling, payment and receipts, and clinical management will all be handled by dental assistants.

Dental assistants can also serve as health promotion and clinic management advocates.

HLT35021 – CERTIFICATE III IN DENTAL ASSISTING

AQF LEVEL:

03

AMOUNT OF TRAINING:

990 HOURS

COURSE DELIVERY:

BLENDED

CAMPUSES:

MELBOURNE, SYDNEY, PERTH

The course is provided through a Blended mode of delivery. It will be delivered over 990 hours including theory, self-paced structured e-learning, simulation training and work based training/ Professional Experience Placement (PEP).

POSSIBLE JOB OUTCOMES

- Dental Assistant
- Dental Nurse
- Dental Assistant and receptionist
- Supporting infection control practices
- Chair-side assistance
- Maintaining a safe and hygienic clinical environment
- Contributing to the administration of the practice.

This course follows Competency-based training which is the concept that individuals learn at different rates as well as through different modes and different environments and that the skills and knowledge that a student has acquired previously are able to be formally recognised.

MODE OF DELIVERY

BLENDED DELIVERY

IHNA has selected blended mode of delivery for this course to support students in the development of the skills and knowledge they are expected of as a dental assistant. The delivery will incorporate online and on-campus theory and simulation-based training and simulation-based assessment.

This includes:

- Structured Interactive Learning (SIL)
- Lectures
- Tutorials
- Simulation Based Training (SBT)
- Simulation Based Assessment (SBA)
- Professional Experience Placement (PEP)

All students are expected to complete SIL at their own time as a part of self-directed interactive learning which equates to 10 hours of study per week.

Lectures will be delivered online in an asynchronous mode, for which recording will be available on Canvas. There will be 10 hours of lecture every week.

Tutorials will be conducted online in a synchronous mode. There will be 10 hours of tutorials every week.

Simulation based training (SBT) and simulation-based assessment (SBA) will be conducted on-campus in block. Students will be provided with dedicated support sessions every week.

*Please call your respective campus locations for more details.

HLT35021 – CERTIFICATE III IN DENTAL ASSISTING

ENTRY REQUIREMENTS

DOMESTIC STUDENTS

- 16 years of age and above at the time of commencement of the course
- Successful completion of an Australian Year 10 qualification or equivalent
- In addition to meeting the academic requirements applicants must demonstrate their competence in literacy and numeracy levels in an Australian Core Skills Framework (ACSF) at exit Level 3 and participate in a pre-training review when enrolling into the course. The successful completion of ACSF test with demonstrated competence as per IHNA LLN requirements must be issued within the last 12 months from the time of admission
- Mature age students (22+) will also be considered without the minimum education requirements. Each case will be reviewed individually to ascertain the capacity of the student to meet course requirements.

IHNA highly recommends students to complete the immunisation process before the PEP start date as some facilities will not provide placement to students without Immunisation.

Aboriginal and/or Torres Strait Islanders are encouraged to apply.

Upon successful completion of all the required units of competency, students will be issued a testamur with record of results.





UNIT OF COMPETENCY

HLTAID011 – PROVIDE FIRST AID

HLTAID011 - Provide First Aid is a nationally recognised unit of competency in Australia that trains individuals to administer first aid in emergency situations.

The course covers techniques like assessing and responding to emergencies, CPR, and first aid for injuries. And illnesses and managing incidents until professional medical assistance arrives. Participants learn to identify and manage common medical emergencies such as asthma, anaphylaxis, heart attack, and stroke.

To undertake the course, individuals must be physically capable of performing CPR and pass language, literacy, and numeracy assessments. The course is a combination of online and face-to-face training with practical assessments.

A crucial qualification for those working or participating in environments where medical emergencies are likely, HLTAID011: Provide First Aid provides the knowledge and skills necessary to provide effective first aid and potentially save lives.

HLTAID011 – PROVIDE FIRST AID

AMOUNT OF TRAINING:**18 HOURS****COURSE DELIVERY:****BLENDED****CAMPUSES:****MELBOURNE, SYDNEY,
PERTH, ROSANNA**

The course is provided through a Blended mode of delivery. It will be delivered over 18 hours including theory, self-paced structured e-learning, simulation training and work based training/ Professional Experience Placement (PEP).

MODE OF DELIVERY**BLENDED DELIVERY**

The course is delivered in a flexible manner, with an online theory component followed by a 6-hour face-to-face session for demonstration and assessments of the practical skills.

- The students are required to complete 10-12 hours of online theory
- It is a requirement that this be completed prior to attending the class
- The online theory is made up of 9 modules.

*Please call your respective campus locations for more details.

ENTRY REQUIREMENTS**DOMESTIC STUDENTS**

The following are the admission criteria for the unit in place at IHNA:

- Applicants must be aged 18 years or over
- Basic Level of Language, Literacy and Numeracy (LLN) knowledge required to follow the theory & assessments and to demonstrate the practical skill components
- Basic computer skills required to complete the online theory and assessments.

Aboriginal and/or Torres Strait Islanders are encouraged to apply.

Upon successful completion of all the required units of competency, students will be issued a testamur with record of results.



UNIT OF COMPETENCY

HLTAID009 – PROVIDE CARDIOPULMONARY RESUSCITATION (CPR)

After successful completion of the unit student will be able to demonstrate the knowledge and skills required to provide CPR, manage and assess an emergency situation, use an automatic external defibrillator (AED), understand DRSABCD and the First Aider's legal responsibilities.

This unit applies to all persons who may be required to provide CPR, in a range of situations, including community and workplace settings.

HLTAID009 – PROVIDE CARDIOPULMONARY RESUSCITATION (CPR)

AMOUNT OF TRAINING:

04 HOURS

COURSE DELIVERY:

BLENDED

CAMPUSES:

MELBOURNE, SYDNEY, PERTH

The course is provided through a Blended mode of delivery. It will be delivered over 04 hours including theory, self-paced structured e-learning, simulation training and work based training/ Professional Experience Placement (PEP).

POSSIBLE JOB OUTCOMES

→ Provide Cardiopulmonary Resuscitation

This course follows Competency-based training which is the concept that individuals learn at different rates as well as through different modes and different environments and that the skills and knowledge that a student has acquired previously are able to be formally recognised.

MODE OF DELIVERY

BLENDED DELIVERY

The course is delivered in a flexible manner, with an online theory component followed by a 2-hour face-to-face session for demonstration and assessments of the practical skills.

The students are required to complete 2 hours of online theory.

It is a requirement that this be completed prior to attending the class.

The online theory is made up of 5 modules

ENTRY REQUIREMENTS

DOMESTIC STUDENTS

The following are the admission criteria for the unit in place at IHNA:

- Applicants must be aged 18 years or over
- Basic Level of Language, Literacy and Numeracy (LLN) knowledge required to follow the theory & assessments and to demonstrate the practical skill components
- Basic computer skills required to complete the online theory and assessments.

Aboriginal and/or Torres Strait Islanders are encouraged to apply.

Upon successful completion of all the required units of competency, students will be issued a testamur with record of results.



UNIT OF COMPETENCY

HLTAID010 – PROVIDE BASIC EMERGENCY LIFE SUPPORT

After successful completion of the unit student will be able to demonstrate the knowledge and skills required to recognise and respond to life-threatening emergencies in line with first aid guidelines determined by the Australian Resuscitation Council (ARC) and other Australian national peak clinical bodies.

This unit applies to all persons who may be required to provide CPR, in a range of situations, including community and workplace settings.

HLTAID010 – PROVIDE BASIC EMERGENCY LIFE SUPPORT

AMOUNT OF TRAINING:

12 HOURS

COURSE DELIVERY:

BLENDED

CAMPUSES:

MELBOURNE, SYDNEY, PERTH

The course is provided through a Blended mode of delivery. It will be delivered over 12 hours including theory, self-paced structured e-learning, simulation training and work based training/ Professional Experience Placement (PEP).

POSSIBLE JOB OUTCOMES

- Provide Basic Emergency Life Support (BLS)

This course follows Competency-based training which is the concept that individuals learn at different rates as well as through different modes and different environments and that the skills and knowledge that a student has acquired previously are able to be formally recognised.

MODE OF DELIVERY

BLENDED DELIVERY

The course is delivered in a flexible manner, with an online theory component followed by a 4-hour face-to-face session for demonstration and assessments of the practical skills.

- The students are required to complete 8 hours of online theory
- It is a requirement that this be completed prior to attending the class
- The online theory is made up of 6 modules.

*Please call your respective campus locations for more details.

ENTRY REQUIREMENTS

DOMESTIC STUDENTS

The following are the admission criteria for the unit in place at IHNA:

- Applicants must be aged 18 years or over
- Basic Level of Language, Literacy and Numeracy (LLN) knowledge required to follow the theory & assessments and to demonstrate the practical skill components
- Basic computer skills required to complete the online theory and assessments.

Aboriginal and/or Torres Strait Islanders are encouraged to apply.

Upon successful completion of all the required units of competency, students will be issued a testamur with record of results.



UNIT OF COMPETENCY

IVCN – INTRAVENOUS CANNULATION (IV CANNULATION)

The IVCN (Intravenous Cannulation) course trains healthcare professionals, such as nurses and paramedics, in the proper techniques of intravenous cannulation to administer fluids, medications, or nutrition directly into the bloodstream.

The course covers topics like patient assessment, anatomy and physiology of veins, insertion techniques, and potential complications. Participants learn to manage IV therapy and recognize and respond to adverse reactions.

IVCN is a critical skill for healthcare professionals working in a range of settings, such as hospitals, clinics, and emergency services. The course is delivered through a combination of theoretical and practical training, and participants must demonstrate proficiency in cannulation procedures.

Upon completion, participants are equipped with the skills and knowledge to perform IV cannulation safely and confidently, ensuring high-quality patient care.

IVCN – INTRAVENOUS CANNULATION (IV CANNULATION)

AMOUNT OF TRAINING:

1 DAY (4 HOURS)

COURSE DELIVERY:

FACE TO FACE

CAMPUSES:

SYDNEY

The course is provided through a face to face mode of delivery. It will be delivered over 1 day (4 hours) hours including theory, self-paced structured e-learning, simulation training and work based training/ Professional Experience Placement (PEP).

POSSIBLE JOB OUTCOMES

→ Clinical and Hospital Labrotary assistant

This course follows Competency-based training which is the concept that individuals learn at different rates as well as through different modes and different environments and that the skills and knowledge that a student has acquired previously are able to be formally recognised.

MODE OF DELIVERY

FACE TO FACE DELIVERY

Students will undergo a series of training methods and study 4 hours in the Campus with the help of a trained educator.

Competency assessment of IV cannulation on model arm. This means that, students will get opportunity to practice the IV Cannula insertion procedure using manikin arm or a model arm.

*Please call your respective campus locations for more details.

ENTRY REQUIREMENTS

DOMESTIC STUDENTS

The following are the admission criteria for the unit in place at IHNA:

- Applicants must be aged 18 years or over
- Basic Level of Language, Literacy and Numeracy (LLN) knowledge required to follow the theory & assessments and to demonstrate the practical skill components
- Basic computer skills required to complete the online theory and assessments.

Aboriginal and/or Torres Strait Islanders are encouraged to apply.

Upon successful completion of all the required units of competency, students will be issued a testamur with record of results.



SHORT COURSES

INFECTION CONTROL SKILL SET

Infection control standards in different job roles across Australia has been impacted by COVID 19. This short course will provide specialized training for individuals to respond in an appropriate manner to reduce or minimise the risk and transmission of communicable diseases such as COVID-19.

A set of skills to follow organisational infection prevention and control policies and procedures, including implementing standard and transmission-based precautions and responding to infection risks in the workplace.

INFECTION CONTROL SKILLS FOR SPECIALISED INDUSTRY

Here are some Infection control Skill Set courses based on industries:

- HLTSS00064 Infection control Skill Set
- HLTSS00065 Infection Control Skill Set (Retail)
- HLTSS00066 Infection Control Skill Set (Food Handling)
- HLTSS00067 Infection control Skill Set (Transport and Logistics)

INFECTION CONTROL SKILL SET

AMOUNT OF TRAINING:

30 HOURS

COURSE DELIVERY:

BLENDED

CAMPUSES:

MELBOURNE, SYDNEY, PERTH

The course is provided through a blended mode of delivery. It will be delivered over 30 hours including theory, self-paced structured e-learning, simulation training and work based training/ Professional Experience Placement (PEP).

POSSIBLE JOB OUTCOMES

→ Achievement of this unit of competency provides credit towards qualifications in a range of training packages where infection control skills are required.

This course follows Competency-based training which is the concept that individuals learn at different rates as well as through different modes and different environments and that the skills and knowledge that a student has acquired previously are able to be formally recognised.

MODE OF DELIVERY

ONLINE THEORY WITH FACE-TO-FACE SIMULATION WORKSHOP AND WORK PLACEMENT:

The theory component is provided through Blended mode delivery. This short course will be delivered and assessed over 30 hours which will include online theory, self-paced structured e-learning, simulation-based training, and work-based training / professional experience placement (PEP).

*Please call your respective campus locations for more details.

ENTRY REQUIREMENTS

DOMESTIC STUDENTS

People who are currently working in a health service such as hospitals, aged and community care centres, medical centres, and surgeries etc.

This module is also available to members of the public who work in hospitality, transport, and customer service roles.

Basic computer skills are required to utilise IHNA's Online learning resources. Students must have access to a computer and internet to complete this blended training.

Aboriginal and/or Torres Strait Islanders are encouraged to apply.

Upon successful completion of all the required units of competency, students will be issued a testamur with record of results.

OUR COURSES

(CONTINUED)

Health Careers International (HCI), Australia, provides courses that meet the Australian Qualifications Framework (AQF) standards through its two leading institutes: the Institute of Health and Nursing Australia (IHNA) and the Institute of Health and Management (IHM).

WHAT IS THE AUSTRALIAN QUALIFICATION FRAMEWORK (AQF)?

The AQF is a national policy that sets the standards for qualifications across the entire education sector in Australia. It aims to ensure that qualifications are recognized and comparable across the country, and that they meet the expectations of students, employers, and the wider community.

AQF LEVELS

The AQF is structured around 10 levels, with Level 1 representing the lowest level of complexity and Level 10 representing the highest level of complexity.

AQF



Our second premier Institute The Institute of Health and Management Australia (IHM Australia) and the courses providing with various AQF Standards are listed below:

AQF LEVEL 9:

This level of qualification corresponds to the level of a master's degree, and requires students to demonstrate a high level of theoretical and applied knowledge in a particular field of study.

An example of an AQF Level 9 course is the Master of Nursing course, which leads into a senior position in nursing practice, leadership, management, policy, or education.

AQF LEVEL 8:

Also known as the postgraduate level, this is a high level of education that requires advanced knowledge and skills in a particular field. The prerequisite for AQF Level 8 is typically a Bachelor's degree or higher, or significant work experience in a related field.

An example of an AQF Level 8 course is a Bachelors Honours degree, Graduate Certificate which offers students a pathway to advance their knowledge and skills and pursue leadership roles in the industry.

ENGLISH COURSES

We offer a variety of online English language courses that you may take at anytime, anywhere, whether English is your first language or second. You can enrol in these courses if you're a native speaker and want to increase your communication abilities in professional environment or career advancement.

In case English is not your 1st language, these courses can help achieve your career goals by assisting you in developing your English grammar, composition and conversational skills.

CAP PROGRAMS

Within the nursing department, the clinical advancement programme (CAP) recognises healthcare professionals who have contributed more than before to patient outcomes and unit/department objectives. It is a dynamic system program that adapts to changes in the nursing profession and the way healthcare is delivered.

BACHELOR OF SOCIAL WORK

Social work education is a field of study that prepares students for careers in helping individuals, families, and communities overcome challenges such as poverty, discrimination, and social injustice.

Social work education typically involves a combination of classroom instruction, field experience, and practical training to develop the knowledge, skills, and values necessary for effective social work practice.



SCHOOL OF NURSING

MASTER OF NURSING

MASTER OF NURSING

ABOUT THE COURSE

The Master of Nursing course enables registered nurses to advance their professional knowledge, skills, and behaviours to higher levels of capability in the practice setting.

IHM's Master of Nursing builds upon the theoretical knowledge and skills gained by nurses in their previous courses, preparing them for work in local, national and international healthcare settings.

Graduates of the Master of Nursing course will have the ability to facilitate changes in practice that will lead to the provision of culturally safe, optimal and person-centered nursing care which will result in better patient health outcomes.

CRICOS COURSE CODE:	AQF LEVEL:	COURSE DURATION:
105600C	09	02 YEARS FULL-TIME OR 04 YEARS PART-TIME
COURSE DELIVERY:	ACCREDITATION:	CAMPUSES:
ON CAMPUS	TEQSA	MELBOURNE, SYDNEY, PERTH

POSSIBLE JOB OUTCOMES

IHM's Master of Nursing helps you sharpen your skills in professional communication, listening, critical thinking, and technology. With this degree in hand, you'll be able to take advantage of more professional and leadership opportunities, including:

- Clinical Nurse Specialist
- Staff Development Nurse
- Clinical Nurse
- Nurse Educator
- Associate Nurse Unit Manager

MODE OF DELIVERY

BLENDED

The course is delivered in a variety of learning and teaching modes including face-to-face, online, and full or part-time, providing flexibility for students to balance work and family commitments with their study requirements.

*Please call your respective campus locations for more details.

ENGLISH REQUIREMENT

- **IELTS:** Overall 6.5 and no band less than 6.0
- **PTE:** Overall 56 and no band less than 46
- **OET:** B for each test component

ENTRY REQUIREMENTS

To be eligible for admission to the Master of Nursing course an applicant is required to:

- Have completed a Bachelor of Nursing degree or an equivalent qualification
- Be an AHPRA registered nurse; or
- Be a registered nurse with the Nurses' Board/Council from the country of origin or place of residence and must have English Language Proficiency as evidenced by:
 - An IELTS level of at least 6.5 with no bands less than 6, or equivalent scores in OET/PTE/other recognised English examination; or
 - Direct entry through a pass in English for Academic Purpose (EAP) course with a minimum score of 70%.





SCHOOL OF SOCIAL WORK

BACHELOR OF SOCIAL WORK

BACHELOR OF SOCIAL WORK

ABOUT THE COURSE

The Bachelor of Social Work emphasises the wellbeing and building of relationships with individuals, families, and communities and linking the local with the global.

The Bachelor of Social Work explores social care, health and wellness programs and initiatives that seek to locate and create systems and relationships that are preventative and educative in nature.

Graduates of the BSW will be able to influence local, national, and global social policy impacting all peoples and communities.

The IHM Bachelor of Social Work offers significant interaction between students, their peers, social work academics, and social work/human services agencies that will provide the knowledge, skills and professional relationship building required to produce the quality and practice-ready graduates that are required by the social work profession.

CRICOS COURSE CODE:

108842E

AQF LEVEL:

07

COURSE DURATION:

04 YEARS FULL-TIME OR
EQUIVALENT PART-TIME

COURSE DELIVERY:

ON CAMPUS/ BLENDED

ACCREDITATION:

TEQSA & AASW

CAMPUSES:

NORTH MELBOURNE

POSSIBLE JOB OUTCOMES

After completing the course, you will get employed in the fields of:

- Child and Family Services
- Counseling
- Child Protection
- Disability
- Ageing
- Refugee and Settlement
- Mental Health
- Rehabilitation
- Mediation

MODE OF DELIVERY

BLENDED

- Mixed-mode of online self-paced learning (25%) and
- face to face / online seminars (75%).

*Please call your respective campus locations for more details.

ENTRY REQUIREMENTS

Standard entry requirements include Year 12 completion or Certificate IV completion or equivalent. Work/ volunteer experience will be considered alongside education requirements.

ENGLISH LANGUAGE PROFICIENCY:

- Academic IELTS level of at least 7 with no band less than 6.0, or equivalent scores in OET/ PTE/ other, OR
- Direct entry through a pass in an Australian English for Academic Purpose (EAP) course with the minimum score of 70%, OR
- As prescribed/ recommended by the AASW.

CREDITS:

Pathway entry with credits for Australian bachelor's degree in Community Work, Youth Work, Human Services, or other Bachelor degrees.

Completion of an Australian VET Diploma in Community Services or Youth Work or Mental Health or completion of an Overseas BSW (verified) gives 8-unit credits across Year 1 / Year 2 of the BSW.

Unit credits from Australian bachelor programs can give up to 12 unit credits.





SCHOOL OF NURSING

**GRADUATE CERTIFICATE IN
ADVANCED NURSING (GCAN)
12 SPECIALISATION**

GRADUATE CERTIFICATE IN ADVANCED NURSING (GCAN) 12 SPECIALISATION

ABOUT THE COURSE

The Graduate Certificate in Advanced Nursing (GCAN) program includes 13 speciality postgraduate courses that will develop your specialty nursing skills, competence, and professional knowledge.

The course is certified in Australia and is also suitable for overseas students who are currently trained nurses working in a specialised nursing context and seeking to further develop their specialised nursing knowledge and formalise their clinical abilities.

The course is available online and is taught by expert lecturers and nursing clinicians. You will learn advanced nursing practices to offer responsive specialised nursing care to patients and their families in modern specialised nursing settings. Our graduates will be confident in their ability to provide high-quality patient care.

The interactive online learning experience at IHM is robust and engaging. IHM's online course delivery is specifically designed to accommodate the hectic schedules of working nurses. It enables nurses to continue their professional growth while maintaining their personal and familial responsibilities.

*This course does not lead directly to registration as a nurse or midwife in Australia.

CRICOS COURSE CODE:

107773K

AQF LEVEL:

08

COURSE DURATION:

26 WEEKS

COURSE DELIVERY:

ONLINE

ACCREDITATION:

TEQSA

12 SPECIALISATIONS

- Critical Care Nursing
- Acute Care Nursing
- Emergency Nursing
- Neonatal Nursing
- Paediatric Nursing
- Mental Health Nursing
- Gerontology Nursing
- Orthopaedic Nursing
- Diabetes Nursing
- Palliative Care Nursing
- Perioperative Nursing
- Renal Nursing

SPECIALISATION 01: CRITICAL CARE NURSING

This specialisation will equip you to assess nursing needs for critically ill patients in a variety of clinical settings and to predict and react to changes in your patient's condition. Critical care nursing in an emergency setting demands knowledge, confidence, and abilities to care for patients successfully.

The course is offered online and includes a requirement to work in a critical care setting under supervision while studying the course.

CRICOS COURSE CODE:

107773K

AQF LEVEL:

08

COURSE DURATION:

26 WEEKS

ACCREDITATION:

TEQSA

COURSE DELIVERY:

ONLINE

LEARNING OUTCOMES

- Pathway to Masters in Nursing and PhD Nursing
- Critical Care Registered Nurse
- Entry pathway to high acuity ICU setting managing patients with pacemaker, undergoing Renal replacement therapy, ECMO, CABG patients with Pulmonary artery catheter, patients with Extra Ventricular drain
- Research Nurse
- Qualification gives you an opportunity to work as Clinical Nurse Specialist (CNS), Clinical Support Nurse (CSN), and with experience Associate Nurse Manager of a unit and Team leader role.

SPECIALISATION 02: ACUTE CARE NURSING

In this course nurses will broaden their area of practise to prepare nurses to manage patients diagnosed with a brief but dangerous condition.

The course is specifically intended to help you improve your ability to manage an expanding number of patients with a range of diseases and with advanced study nursing needs in an acute care setting.

CRICOS COURSE CODE:

107773K

AQF LEVEL:

08

COURSE DURATION:

26 WEEKS

ACCREDITATION:

TEQSA

COURSE DELIVERY:

ON CAMPUS

LEARNING OUTCOMES

- Pathway to Masters in Nursing
- Acute Care Registered Nurse
- Entry pathway to high acuity acute setting managing patients with complex health needs
- Entry to find employment in Cardiac Care Units, High dependency Units, High Acuity medical and surgical wards (Neurology ward, Post operative wards etc)
- Qualification gives you an opportunity to work as Clinical Nurse Specialist (CNS), Clinical Support Nurse (CSN), and with experience Associate Nurse Manager of a unit and Team leader role.

GRADUATE CERTIFICATE IN ADVANCED NURSING (GCAN) 12 SPECIALISATION

**SPECIALISATION 03:
EMERGENCY NURSING**

This specialty course will prepare you to assess nursing needs for patients in emergency situations. Emergency nursing involves knowledge, confidence, and abilities to care for patients successfully. The course promotes nurses to broaden their area of practise by focusing on the evaluation and nursing treatment of critically sick clients in acute care settings. Clinical reasoning abilities and evidence-based specialised nursing knowledge will be used to connect theoretical emergency care knowledge to current nursing practise.

CRICOS COURSE CODE:

107773K

AQF LEVEL:

08

COURSE DURATION:

26 WEEKS

ACCREDITATION:

TEQSA

COURSE DELIVERY:

ONLINE

LEARNING OUTCOMES

Emergency nurses work in diverse roles and places, including:

- Highly advanced emergency department
- Work as staff development nurse
- Clinical nurse specialist in Emergency departments.

**SPECIALISATION 04:
MENTAL HEALTH NURSING**

Rapid changes in society have created challenges for individuals and their communities. All elements of the healthcare system need professionals with skills and expertise to promote individual and community mental health.

This course will equip you to assess the nursing needs of patients in a variety of clinical settings and develop a greater understanding of mental health theory and clinical practice.

CRICOS COURSE CODE:

107773K

AQF LEVEL:

08

COURSE DURATION:

26 WEEKS

ACCREDITATION:

TEQSA

COURSE DELIVERY:

ON CAMPUS

LEARNING OUTCOMES

Mental health nurses work in diverse roles and places, including:

- Adult, Child health and youth, and aged acute inpatient units
- Early Psychosis and Headspace
- Residential and non-residential rehabilitation programs
- Community-based teams that provide crisis response, assertive outreach and continuing care
- Emergency departments
- Forensic and justice system
- Primary care sector and community health centres
- Training, education and research.

SPECIALISATION 05: GERONTOLOGY NURSING

The world's population is ageing, with older members of the community forming a growing proportion of the total population. In response, this course will expand your skills in chronic conditions, dementia and end-of-life care for complex ageing populations.

Additionally, this course will assist you in developing leadership skills and researching the scientific, psychological, and social elements of ageing.

CRICOS COURSE CODE:

107773K

AQF LEVEL:

08

COURSE DURATION:

26 WEEKS

ACCREDITATION:

TEQSA

COURSE DELIVERY:

ONLINE

LEARNING OUTCOMES

Gerontology nurses work in diverse roles and places, including:

- Acute and chronic units in hospital settings
- Community or residential facilities
- Rehabilitation facilities
- Senior centres
- Retirement communities and patients' homes.

SPECIALISATION 06: ORTHOPAEDICS NURSING

An orthopaedic nurse focuses on the prevention and treatment of musculoskeletal disorders and associated traumatic conditions.

This course will enhance your current nursing knowledge and explores the impact of acute and chronic illness, differentiation of the range of musculoskeletal dysfunction associated with trauma and emphasises assessment and management strategies within both the adult and paediatric setting.

CRICOS COURSE CODE:

107773K

AQF LEVEL:

08

COURSE DURATION:

26 WEEKS

ACCREDITATION:

TEQSA

COURSE DELIVERY:

ON CAMPUS

LEARNING OUTCOMES

Orthopaedics nurses work in diverse roles and places, including:

- Inpatient units in hospital settings – Surgical, Orthopaedic departments
- Trauma centres
- Speciality hospitals
- Community centres
- Rehabilitation centres.

GRADUATE CERTIFICATE IN ADVANCED NURSING (GCAN) 12 SPECIALISATION

SPECIALISATION 07:**DIABETES NURSING**

Diabetes Specialist Nurses are crucial in providing good patient care and promoting self-care management in a variety of care settings.

This course provides a systematic introduction to the fundamentals of diabetes nursing, equipping students with the information and skills necessary to pursue a career as a Diabetes nurse in a variety of healthcare settings.

CRICOS COURSE CODE:

107773K

AQF LEVEL:

08

COURSE DURATION:

26 WEEKS

ACCREDITATION:

TEQSA

COURSE DELIVERY:

ONLINE

LEARNING OUTCOMES

Students will examine the origins, risk factors, pathophysiology, symptoms, therapies, interprofessional care, psychosocial support, and nursing care of individuals with type 1 or type 2 diabetes, as well as their relatives and caregivers.

SPECIALISATION 08:**PERIOPERATIVE NURSING**

Perioperative nurses work with patients who are having operative or other invasive procedures. They help plan, implement and evaluate treatment of the surgical patient and may work closely with the patient, family members, and other health care professionals.

CRICOS COURSE CODE:

107773K

AQF LEVEL:

08

COURSE DURATION:

26 WEEKS

ACCREDITATION:

TEQSA

COURSE DELIVERY:

ON CAMPUS

LEARNING OUTCOMES

This course provides a structured introduction to the principles of perioperative nursing, laying the groundwork for the knowledge and skills necessary to practise as a perioperative nurse who provides client-centered care prior to, during, and after surgical and invasive procedures in a variety of healthcare settings (hospitals; day surgery centres; endoscopy suites).

GRADUATE CERTIFICATE IN ADVANCED NURSING (GCAN) 12 SPECIALISATION

**SPECIALISATION 09:
PALLIATIVE CARE NURSING**

Nurses spend the greatest period of time with patients at the end of their lives and are uniquely placed to shape and improve the delivery of palliative care services in countries around the world.

This course provides a systematic introduction to palliative care nursing concepts, emphasising the information and skills necessary to perform as a palliative care nurse in an average life health care context.

CRICOS COURSE CODE:

107773K

AQF LEVEL:

08

COURSE DURATION:

26 WEEKS

ACCREDITATION:

TEQSA

COURSE DELIVERY:

ONLINE

LEARNING OUTCOMES

Palliative care nurses work in diverse roles and places, including:

- Pathway to Masters in Nursing
- Palliative Care Registered Nurse
- Entry pathway to palliative care nursing setting, managing patients with complex health needs
- Entry to find employment in Palliative Care Unit
- Finding roles in community setting providing palliative care
- Qualification gives you an opportunity to work as Clinical Nurse Specialist (CNS), Clinical Support Nurse (CSN), and with experience Associate Nurse Manager of a unit and Team leader role.

**SPECIALISATION 10:
RENAL NURSING**

Renal nursing is a specialised area of nursing practice that treats patients with kidney disease and educates both patients and families about treatment protocols. Renal nurses assume a wide range of responsibilities from clinical care to administration.

This course provides a systematic introduction to the concepts of Renal Nursing via the acquisition of the information and skills necessary to work as a person-centered care Renal nurse in a life span healthcare context.

CRICOS COURSE CODE:

107773K

AQF LEVEL:

08

COURSE DURATION:

26 WEEKS

ACCREDITATION:

TEQSA

COURSE DELIVERY:

ON CAMPUS

LEARNING OUTCOMES

Students will examine the critical necessity of a person-centered approach to meeting the needs of people and families in acute, chronic, rehabilitative, and nursing home settings, and examine nursing care for individuals from diverse cultural groups, particularly Aboriginal and Torres Strait Islander peoples who need appropriate care.

GRADUATE CERTIFICATE IN ADVANCED NURSING (GCAN) 12 SPECIALISATION

**SPECIALISATION 11:
PAEDIATRIC NURSING**

This course equips general nurses with increased knowledge and abilities in the specialised area of paediatric nursing and prepare nurses to work in a range of paediatric nursing settings safely and professionally.

Paediatric nurses meet the nursing care requirements of newborns, children, and adolescents as they quickly move through physical, mental, and social phases of development.

CRICOS COURSE CODE:

107773K

AQF LEVEL:

08

COURSE DURATION:

26 WEEKS

ACCREDITATION:

TEQSA

COURSE DELIVERY:

ONLINE

LEARNING OUTCOMES

→ Paediatric Nurse.

SPECIALISATION 12: NEONATAL NURSING

Caring for newborns with significant medical issues demands a skilled team with specialised expertise. As a neonatal nurse specialist, your focus will be on providing supportive health care of newborns.

Graduate Certificate in Neonatal Nursing will enhance your current nursing knowledge and abilities by focusing on neonatal nursing methods and specialised talents. You will feel confident in your ability to use these abilities when giving nursing care to a sick infant and assistance to the family.

CRICOS COURSE CODE:

107773K

COURSE DURATION:

26 WEEKS

COURSE DELIVERY:

ON CAMPUS

AQF LEVEL:

08

ACCREDITATION:

TEQSA

LEARNING OUTCOMES

Scope of practice in neonatal advanced nursing course:

- Use the advanced knowledge gained from the course to pursue further education
- Post graduate certificate in neonatal nursing
- Master of nursing
- Master of advanced nursing practice, then leads to neonatal nurse practitioner (NNP)
- Path way to PhD in nursing.

It provides advanced knowledge and skills for the provision and coordination of evidence-based care for the neonate and the family in a clinical setting & enhances career advancement as:

- Entry to metropolitan tertiary hospital NICU environment (Advanced neonatal clinical care)

- Leadership roles: Research nurse
- Clinical nurse specialist
- Clinical support nurse and nurse educator role
- Research nurse
- Nurse unit managers, case manager (care manager)
- Neurodevelopmental care nurse
- Discharge planning coordinators
- Lactation nurse consultants
- Eye nurse(retinopathy screening nurse across Victoria).

POSSIBLE JOB OUTCOMES

IHM's GCAN speciality course is a postgraduate course leading to a Master of Nursing course. Students may continue their education by enrolling in a Master of Nursing programme online or on campus.

The course is designed to elevate students' patient care to an international level by sharpening their theoretical foundations in nursing science as well as their practical knowledge and abilities.

GRADUATE CERTIFICATE IN ADVANCED NURSING (GCAN) 12 SPECIALISATION

MODE OF DELIVERY**ONLINE**

IHM believes in flexible learning as most of our GCAN students work full time. Keeping this in mind, the GCAN specialisation courses are delivered online, where the student gets to keep their current job while studying with us at IHM:

- All students joining the course will be starting with one single unit and progressing to speciality units
- Single unit delivery will be happening on Thursday, 5 PM to 9 PM AEST time to accommodate students studying this course globally
- Course Orientation is conducted every Monday for new students joining every month
- GCAN course has monthly intakes, and the students get the flexibility to study 1 unit per semester
- Students can complete the course in one year by taking one unit per term or in six months full-time.

*Please call your respective campus locations for more details.

ENTRY REQUIREMENTS

To be eligible for admission to the Graduate Certificate in Advanced Nursing an applicant is required to:

- Have completed a Bachelor of Nursing degree or an equivalent qualification
- Be an AHPRA registered nurse; or
- Be a registered nurse with the Nurses' Board/Council from the country of origin or place of residence.

English Language proficiency requirement for International Students:

- IELTS level of at least 6.5 with no band less than 6, or equivalent scores in OET/PTE/ other recognised English examination
- Nurses currently registered and working in English Speaking Countries do not need this requirement. The recognised countries are: Australia, United States, United Kingdom, Canada, New Zealand, the Republic of Ireland and South Africa, or Direct entry through a pass in English for Academic Purpose (EAP) course with the minimum score of 70%.



SCHOOL OF NURSING

**AUSTRALIAN NURSING PRACTICE
GRADUATE CERTIFICATE IN ADVANCED
NURSING (GCAN)**

AUSTRALIAN NURSING PRACTICE (THE GRADUATE CERTIFICATE IN ADVANCED NURSING)

ABOUT THE COURSE

Australian Nursing Practice (The Graduate Certificate in Advanced Nursing) builds on the knowledge and skills of Internationally Qualified Registered Nurses and introduces them to nursing practice in Australia.

Students will learn from Australian Registered Nurses about the Australian health care system which is the perfect preparation for nurses that are looking to register as a nurse in Australia.

The course includes four weeks OSCE in preparation for OBA registration testing in Australia and a four-week Practical Experience Placement (PEP) in healthcare facilities, following successful completion of the theory, simulation and OSCE preparation.

*This course does not lead directly to nursing registration in Australia.

CRICOS COURSE CODE:
107773K
AQF LEVEL:
08
COURSE DURATION:
26 WEEKS
COURSE DELIVERY:
ON CAMPUS AND HYBRID
ACCREDITATION:
TEQSA
CAMPUSES:
MELBOURNE, SYDNEY, PERTH

Hybrid mode of delivery to help Overseas registered nurses in passing the OBA exam with a postgraduate nursing qualification:

- Enrol in the course and begin Three online unit + Online NCLEX-RN Preparation (3 months)
- Attend NCLEX-RN Exam from your home country
- Obtain AHPRA letter to appear for OSCE exam at Adelaide Health Simulation Centre, Australia
- Travel to Australia on a visitor visa, 90 days before your OSCE exam
- 8 weeks of OSCE preparation
- After obtaining their nursing registration, IHM assists all students in finding employment
- You will be well-equipped to take the OBA exam and enter the workforce as a post-graduate nurse.

MODE OF DELIVERY

ON CAMPUS AND HYBRID

- This programme includes a Practical Experience Placement (PEP) to allow the IQRN to further improve their knowledge and abilities in the context of Australian nursing Practice
- After passing the theory, simulation, and OSCE, students will be eligible to begin Practical Experience Placement (PEP)
- This course will allow students to expand on what they learned in the core unit of this speciality, such as the framework of accountability and responsibility for practicing evidence-based nursing within the Australian healthcare system's legislation and standards
- Each week will be devoted to a different theme. The students' existing knowledge and relevant professional experience were considered when creating the Course Learning Outcomes (ULOs).

ENTRY REQUIREMENTS

To be eligible for admission to the Graduate Certificate in Advanced Nursing an applicant is required to:

- Have completed a Bachelor of Nursing degree or an equivalent qualification
- Be an AHPRA registered nurse; or
- Be a registered nurse with the Nurses' Board/Council from the country of origin or place of residence
- Applicants must have concurrent employment (or access to) in the specific specialty clinical area of study and one year of full-time post registration clinical experience.

English Language proficiency requirement for International Students:

- an IELTS level of at least 6.5 with no band less than 6, or equivalent scores in OET/ PTE/other recognised English examination
- Nurses currently registered and working in English Speaking Countries do not need this requirement. The recognised countries are Australia, United States, United Kingdom, Canada, New Zealand, the Republic of Ireland and South Africa or
- 3 direct entries through a pass in English for Academic Purpose (EAP) course with the minimum score of 70%.





SCHOOL OF NURSING

**SPECIALISATIONS IN NURSING
(NON-AWARD SHORT COURSES)
12 SPECIALISATION**

SPECIALISATIONS IN NURSING (NON-AWARD SHORT COURSES) 12 SPECIALISATION

ABOUT THE COURSE

The Institute of Health and Management Australia (IHM) offers a range of non-award specialisation courses in nursing that are designed to enhance the knowledge and skills of healthcare professionals.

These online, non-award courses require 10-12 hours of self study every week, and can be completed in 12 weeks.

They are designed for registered nurses, enrolled nurses, and healthcare professionals who want to develop their expertise in a specific area of nursing.

With a focus on evidence-based practice, these courses aim to equip healthcare professionals with the skills and knowledge they need to provide the best possible care to their patients.

COURSE DELIVERY:

ONLINE

COURSE DURATION:

12 WEEKS

ACCREDITATION:

TEQSA

12 SPECIALISATIONS

- Critical Care Nursing
- Acute Care Nursing
- Neonatal Nursing
- Renal Nursing
- Mental Health Nursing
- Emergency Nursing
- Gerontology Nursing
- Perioperative Nursing
- Paediatric Nursing
- Orthopaedics Nursing
- Diabetes Nursing
- Palliative Nursing

MODE OF DELIVERY

ONLINE

Online Classes happen every Thursday 5 – 8 PM.



SCHOOL OF ENGLISH

GENERAL ENGLISH

GENERAL ENGLISH

ABOUT THE COURSE

The purpose of the General English programme is to help students build their foundational language abilities so that they can feel confident and ready to start their studies in English.

You can anticipate social outings and recreational time that will let you practise speaking English in a natural setting as part of the course, giving you the chance to gain confidence.

All facets of the English language—speaking, listening, pronunciation, grammar, reading, and writing—are developed in our general course. Your basic communication skills in practical English applications will improve. You will be asked to contribute as much as you can in your English class by working independently, in pairs, and in groups, as well as by taking part in activities that involve the entire class. Any international students who come from a non-English speaking background or whose first language is not English and want to improve their English language skills should take this course.

ENGLISH LEVEL:

04

COURSE DURATION:

56 WEEKS

COURSE DELIVERY:

ON CAMPUS

CAMPUSES:

MELBOURNE, SYDNEY, PERTH

LEARNING OUTCOMES

- The fundamentals of communication, including that of reading, writing, and listening
- The enhancement of vocabulary and grammar
- Knowing when to use grammar and how to understand it
- Finding the main idea and specific details while listening and reading
- Construction of Vocabulary
- Utilising appropriate body language
- General development of writing
- Dialogue in English.

MODE OF DELIVERY

ON CAMPUS

Through the course of your period of study, you will be sitting weekly tests or as per your workbooks to constantly monitor your progress. These assessments will be valid, reliable, fair, and flexible.

All assessments will follow these guidelines:

- They will be formative and summative
- College developed material will have clear identification of assessment outcomes as they relate to progress through the course
- Assessment outcomes will be moderated, and the college will provide clear and regular results on all assessment outcomes and course progress throughout the course.

ENTRY REQUIREMENTS

- Aged 18 years or over at the time of commencement
- At a level of English proficiency of A2 or above in the CEFR (Elementary) based on placement test results
- Able to meet current eligibility requirements for a student visa
- Your Course Coordinator is responsible for selection of candidates for admission in accordance with the Student Selection and Admission Policy and Procedure for Courses Delivered to Overseas Students and relevant guidelines
- Attendance requirements
- When studying in Australia on a student visa, you are required to meet all attendance requirements (minimum 80% attendance).

SCHOOL OF ENGLISH

ENGLISH TEST PREPARATION COURSES E2*

ABOUT THE COURSE

IHM has partnered with E2 English to provide online test preparation courses for students planning to undertake the IELTS, PTE or OET test. Our courses offer exceptional and unique learning resources, live online classes and mock tests that will build your confidence and skillset, ultimately enabling you to excel at your chosen English language exam and achieve the score that you require.

Here is an overview of what you can expect to receive from your chosen course:

- 3 months of access to course material and classes
- 100% original online content and study resources
- Unlimited access to live online classes with expert instructors
- Unique mock tests with personalised feedback to help you improve.

COURSE DURATION:**3 MONTHS****COURSE DELIVERY:****ON CAMPUS**

MODULES

- Listening
- Reading
- Writing
- Speaking
- 2x Mock tests with expert feedback



SCHOOL OF ENGLISH

ENGLISH FOR ACADEMIC PURPOSES (EAP)

ENGLISH FOR ACADEMIC PURPOSES (EAP)

ABOUT THE COURSE

English for Academic Purposes (EAP) prepares students for further study at a tertiary level and equips them with the communication skills required to excel in the workplace environment of an English-speaking country like Australia. Our EAP programme also provides a direct pathway into further study with IHM, including our Nursing and Social Work courses.

The academic skills you will learn in this programme are relevant and applicable to many areas of study and working life, including healthcare, business, the humanities and many others. As you progress through the EAP course, you will learn the skills required for higher and more challenging areas of study.

ENGLISH LEVEL:**02****COURSE DURATION:****56 WEEKS****COURSE DELIVERY:****ON CAMPUS AND ONLINE****CAMPUSES:****MELBOURNE****LEARNING OUTCOMES**

The EAP course will help you to:

- Open direct pathways to further study
- Participate in group-work projects
- Learn essential academic reading, writing, speaking and listening skills
- Write academic essays that include citation of peer-reviewed source materials
- Write academic essays that include citation of peer-reviewed source materials
- Understand to critically read and evaluate a wide range of essays and longer texts
- Participate in workplace role-play activities
- Become more familiar with the Australian learning environment.

MODE OF DELIVERY**ON CAMPUS**

Through the course of your period of study, you will be sitting weekly tests or as per your workbooks to constantly monitor your progress. These assessments will be valid, reliable, fair, and flexible.

All assessments will follow these guidelines:

- They will be formative and summative
- College developed material will have clear identification of assessment outcomes as they relate to progress through the course
- Assessment outcomes will be moderated, and the college will provide clear and regular results on all assessment outcomes and course progress throughout the course.

ENTRY REQUIREMENTS

- You will need to demonstrate your current English proficiency through the provision of test results which requires minimum (IELTS: 6 bands, PTE: 52, TOEFL IBT: 60-80, OET: C) at time of application and/or be asked to complete an internal placement test.

PARTICIPATION REQUIREMENTS

- When studying in Australia on a student visa, you are expected to meet all attendance requirements (minimum 80% attendance). The participation of international students will be monitored by the college, and you may receive a warning if your attendance does not meet your obligations. Engagement is also closely monitored for online students.





CENTRE OF EXCELLENCE IN HEALTH CAREERS ADVANCEMENT PROGRAMS (CAP)

NCLEX FOR RN'S

**(NATIONAL COUNCIL LICENSURE EXAMINATION
FOR REGISTERED NURSES)**

NCLEX FOR RN'S (NATIONAL COUNCIL LICENSURE EXAMINATION FOR REGISTERED NURSES)

ABOUT THE COURSE

The Australian Health Practitioner Regulation Agency (AHPRA) has introduced the National Council Licensure Examination for Registered Nurses (NCLEX-RN) as a standardised test to assess whether a candidate is ready to be licenced as an entry-level nurse in Australia. Pearson VUE NCLEX RN Examination conducts this examination in most countries.

The Australian Health Practitioners Regulation Agency's (AHPRA) NCLEX-RN examination is a way to test your nursing knowledge and sharpen your critical thinking skills, and IHM's NCLEX-RN preparation course will help you do just that.

COURSE UNITS:

01

COURSE DURATION:

12 WEEKS

COURSE DELIVERY:

ONLINE

LEARNING OUTCOMES

You will be eligible to move to the OSCE stage after passing the NCLEX RN examination. AHPRA will contact you shortly to arrange for your OSCE assessment at the Adelaide Health Simulation Centre. We advise you to continue your studies for the Objective Structured Clinical Examination.

Face-to-face OSCE preparation classes are available at all three of IHM's campuses in Melbourne, Sydney, and Perth. Face-to-face OSCE preparation classes are available at all three of IHM's campuses in Melbourne, Sydney, and Perth.

Did you know that IHM provided an EPIQ-RN bridging programme for international nurses, and just over 2155 nurses obtained Australian nursing registration? Our educators have previously delivered EPIQ-RN courses, and our labs remain the same!! So you don't have to be concerned about the next step after passing the NCLEX-RN; you're in safe hands!

IHM is Australia's only institute that offers both an OBA preparatory programme and a Master of Nursing degree. You can continue your education to earn a Master of Nursing degree and become a leader in the healthcare profession.

THE NEW NURSING REGISTRATION PROCESS COMPRISES OF 7 STEPS:

All assessments will follow these guidelines:

- Step 1 – Self Check
- Step 2 – IQNM Assessment Process
- Step 3 – Orientation: Part A
- Step 4 – Portfolio Stage
- Step 5 – NCLEX-RN (Multiple Choice Questions)
- Step 6 – OSCE
- Step 7 – Orientation: Part B

ENTRY REQUIREMENTS

You must hold current registration as a Registered Nurse in your home country.



CENTRE OF EXCELLENCE IN HEALTH CAREERS ADVANCEMENT PROGRAMS (CAP)

OSCE FOR RN'S

**OBJECTIVE STRUCTURED CLINICAL
EXAMINATION FOR REGISTERED NURSES**

OSCE FOR RN'S OBJECTIVE STRUCTURED CLINICAL EXAMINATION FOR REGISTERED NURSES

ABOUT THE COURSE

Nursing and Midwifery Board of Australia implemented Outcomes-Based Assessment for Internationally qualified registered nurses in 2020. OSCE is the practical component in The Outcomes-Based Assessment for IQRNS.

The Objective Structured Clinical Examination is a multifunctional assessment tool that may be used to evaluate IQRN's in a clinical context. Objective evaluation and direct observation are used to establish a person's level of competency in a given task.

Students can be consistently evaluated on a wide range of clinical competencies according to their accuracy, objectiveness, and reproducibility. In contrast to a normal clinical exam, the OSCE may evaluate important aspects of IQRN's efficacy, such as communication skills and the ability to handle unexpected patient behavior.

COURSE UNITS:

01

COURSE DURATION:

02 WEEKS

COURSE DELIVERY:

ON CAMPUS

CAMPUSES:

**MELBOURNE CBD, MELBOURNE
HEIDELBERG, PERTH & SYDNEY**

LEARNING OUTCOMES

You'll be prepared for the Outcomes-Based Assessment (OBA) in Australia if you complete the OSCE for RNs course. You will gain a thorough grasp of the OSCE exam at the Adelaide Health Simulation Centre through this program.

Students will be able to formulate working diagnoses, analyse data and images, request and interpret investigations, and enhance their communication skills at the end of the course.

Many aspects of the OSCE for RN's course will teach overseas nurses, notably in terms of objective, uniformity, and flexibility of clinical situations that may be tested, which indicates superiority over conventional clinical evaluation.

It may be used to evaluate students at various levels of training in a short amount of time, across a wide range of abilities and problems. In order to prepare for the exam, this course will remove any preconceptions and allow all nurses to go through the same scope and requirements.

THE NEW NURSING REGISTRATION PROCESS COMPRISES OF 7 STEPS:

All assessments will follow these guidelines:

- Step 1 – Self Check
- Step 2 – IQNM Assessment Process
- Step 3 – Orientation: Part A
- Step 4 – Portfolio Stage
- Step 5 – NCLEX-RN (Multiple Choice Questions)
- Step 6 – OSCE
- Step 7 – Orientation: Part B

ENTRY REQUIREMENTS

You must hold current registration as a Registered Nurse in your home country.

HOW TO APPLY

IHNA & IHM



ENTRY REQUIREMENTS

Before you start with the online application process, kindly ensure that you meet all the entry requirements for your preferred course.



LODGING AN APPLICATION

You can enquire or apply via IHNA or IHM registered agents, email (enquiry@ihna.edu.au) or (enquiry@ihm.edu.au), through phone or our website. When applying online via our website you need to ensure you have the required information ready to go.



WHAT COURSE YOU PLAN TO STUDY

The entry requirements for your preferred degree. Please ensure you have all relevant documents to upload to your application (e.g., copies of your transcripts).



HOW TO APPLY ONLINE

REGISTER: START AN APPLICATION ACCOUNT

Select Register for a new account or use your existing IHNA or IHM account if you are a current student. Complete the registration form with personal details and confirm your information.

This will generate your temporary login details; you can then return to complete your application at a later time.

AFTER CREATING AN ACCOUNT WITH IHNA OR IHM

You will have to fill in your details including your contact details, qualification, and experience. Select your course and campus preferences: choose the degree you want to apply for. You can change your course preferences at any time before submitting your application.

SUPPLY SUPPORTING DOCUMENTS

Complete all required information and upload supporting documents to meet the eligibility requirements.

SUBMIT YOUR APPLICATION

Accept the terms and conditions and submit the application fee payment. Once you have done this, your application will be considered complete.

UPON SUBMITTING YOUR APPLICATION

One of our IHNA or IHM admissions consultants will contact you and provide you with more details about the enrolment process.

CONFIRMATION OF YOUR APPLICATION

Once your application is successfully submitted, you will receive an email from IHNA: The email is sent after you have submitted your application. This email confirms the successful submission of your application. It will summarise your application details and provide you with details about uploading application documentation.

ASSESSMENT TURN-AROUND TIME

If applications are complete and all supporting documents are submitted, most applicants will receive an outcome within 1- 3 days.

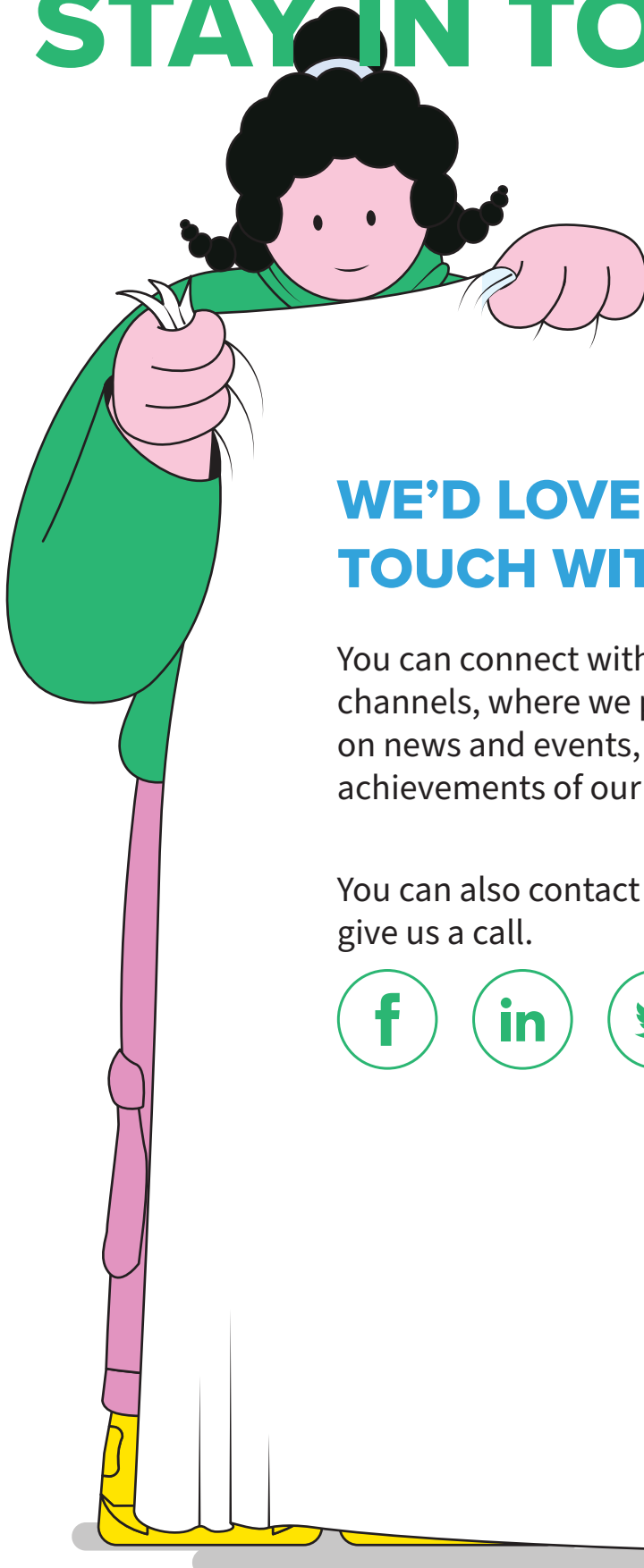
LETTER OF OFFER AND ACCEPTANCE

Within 1- 3 days you will be notified of your outcome. If successful, you will be provided with a “Letter of Offer” by our admissions team. You will have to accept the “Letter of Offer” by signing it and paying the relevant fee.

IHNA & IHM ADMISSIONS TEAM ACTIONS CONFIRMATION

IHNA & IHM Admissions team will issue Confirmation of Enrolment (CoE) or Confirmation of Admissions (CoA), depending on the application.

STAY IN TOUCH

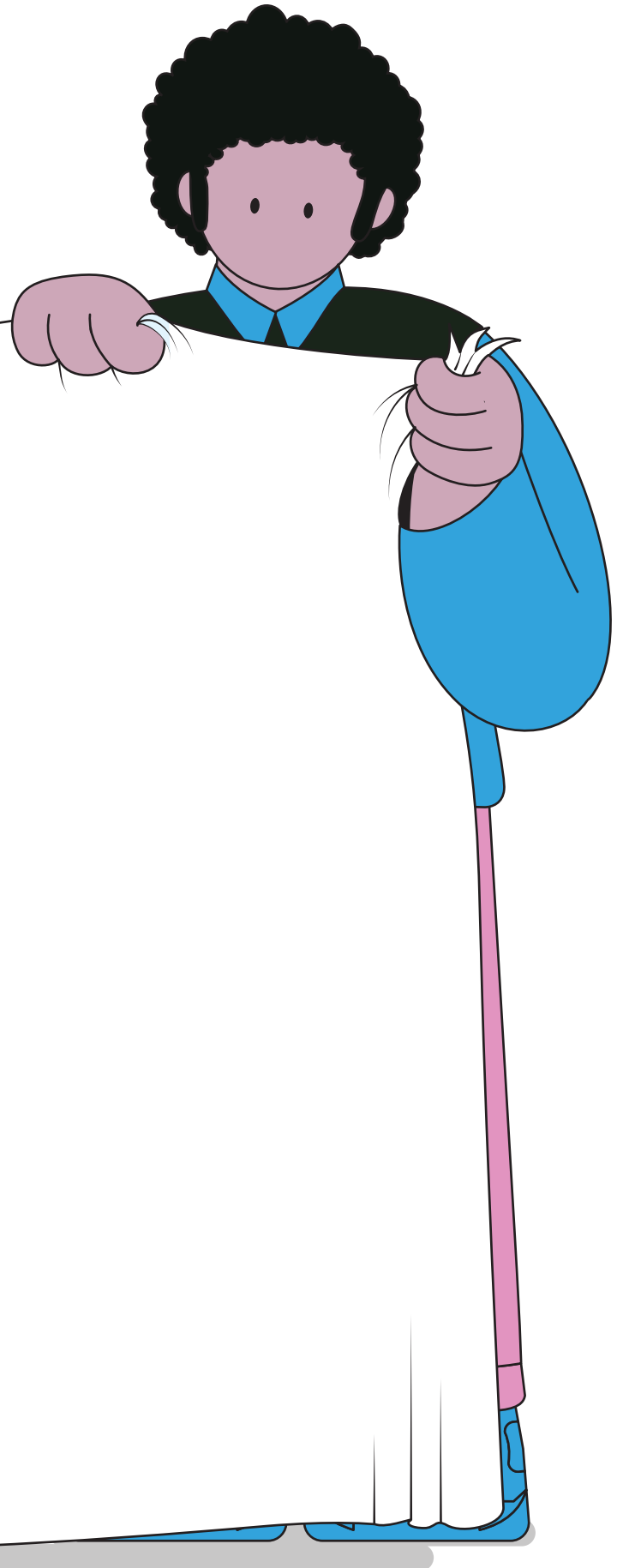


WE'D LOVE TO STAY IN TOUCH WITH YOU!

You can connect with us on our social channels, where we post regular updates on news and events, and share the achievements of our students and alumni.

You can also contact us through email or give us a call.





OUR CAMPUSES & LOCATIONS

 **Melbourne**

 **Perth**

 **Sydney**

 **Kochi**



HCI Australia



HEALTH CAREERS INTERNATIONAL AUSTRALIA

www.hci.edu.au | enquiry@healthcareers.edu.au

+61 3 9455 4400

[Legal entity: Health Careers International Pty Ltd.](#)

ACN: 106 800 944 | ABN: 59 106 800 944 | RTO ID: 21985 | CRICOS Provider Code: 03386G